

100 V Speakers

EDL-255/WS

Order No. 16.0860



PA wall and ceiling speaker

- 100 V line technique or 8 Ω operation
- 6-step power selector switch for 15/8/4/2 W_{RMS}/off or 8 Ω operation
- White plastic cabinet with movable mounting bracket

The corresponding radiation angles can be found on our website www.monacor.com



EDL-250/WS

Order No. 16.2290



Weatherproof PA wall and ceiling speaker

- 100 V line technique
- Protected against powerful water jets
- Weatherproof plastic cabinet
- Connection cable with 3 power taps
- Movable mounting bracket



EDL-110/WS

Order No. 16.1930



Weatherproof PA wall and ceiling speaker

- 100 V line technique
- 1 speaker with polypropylene cone
- Splashproof due to plastic cabinet with rubber seals and high-strength cable gland
- Connection cable with 3 power taps
- Movable mounting bracket and screws made of stainless steel



Model	EDL-255/WS	EDL-250/WS	EDL-110/WS
Frequency range	100-15,000 Hz	125-15,000 Hz	120-20,000 Hz
Power capability, 100 V	15/8/4/2 W _{RMS}	30/15/7.5 W _{RMS}	10/5/2.5 W _{RMS}
Power capability, 8 Ω	15 W/8 Ω	-	-
SPL (1 W/m)	92 dB	101 dB	94 dB
Admiss. ambient temp.	0-40 °C	-20 °C to +50 °C	-20 °C to +50 °C
Dimensions	ø 180 mm x 280 mm	ø 180 mm x 200 mm	ø 180 mm x 270 mm
Weight	3 kg	2.1 kg	2 kg

100 V Speakers

EDL-240/WS

Order No. 16.3100

EDL-220/WS

Order No. 16.1950



Weatherproof PA wall and ceiling speakers, projector speakers

- 100 V line technique
- 2 speakers with polypropylene cone for bilateral radiation
- Splashproof due to plastic cabinet with rubber seals
- Connection cable with 3 power taps
- Movable mounting bracket and screws made of stainless steel

2 x speaker

EDL-115/WS

Order No. 16.1730

EDL-112/WS

Order No. 16.1720



Weatherproof PA wall and ceiling speakers

- 100 V line technique
- Protected against powerful water jets
- Weatherproof aluminium cabinet
- Connection cable with 3 power taps
- Movable mounting bracket and screws made of stainless steel

2 x speaker

EDL-222/WS

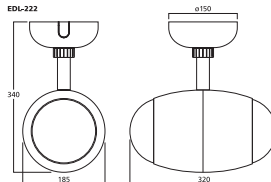
Order No. 16.2690



PA wall and ceiling speaker

- 100 V line technique
- 2 speakers for bilateral radiation
- High-quality sound with an excellent linearity and a reproduction of a wide brilliance frequency range
- ABS housing of an appealing design with coated steel protective grille
- Connection cable with 4 power taps
- Ceramic terminal block with fuse

The corresponding radiation angles can be found on our website www.monacor.com



2 x speaker UL 94V-0



40 W_{RMS}

20 W_{RMS}



15 W_{RMS}

12 W_{RMS}



20 W_{RMS}

Model	EDL-240/WS	EDL-220/WS	EDL-115/WS	EDL-112/WS	EDL-222/WS
Frequency range	120-20,000 Hz	120-20,000 Hz	130-20,000 Hz	140-20,000 Hz	70-20,000 Hz
Power capability, 100 V	40/20/10 W _{RMS}	20/10/5 W _{RMS}	15/7.5/3.75 W _{RMS}	12/6/3 W _{RMS}	20/10/5/2.5 W _{RMS}
SPL (1 W/m)	94 dB	94 dB	90 dB	88 dB	86 dB
Max. rated SPL	110 dB	-	-	-	-
Admiss. ambient temp.	-20 °C to +50 °C	-10 °C to +40 °C	-20 °C to +50 °C	-20 °C to +50 °C	-20 °C to +50 °C
Dimensions	ø 180 mm x 251 mm	ø 180 mm x 251 mm	150x150x175 mm	150x150x205 mm	185x340x320 mm
Weight	3.13 kg	2.75 kg	2.4 kg	3.1 kg	3.9 kg

100 V Speaker Systems



EUL-80/SW

Order No. 16.1190

EUL-80/WS

Order No. 16.1230

EUL-60/SW

Order No. 16.1170

EUL-60/WS

Order No. 16.1180

EUL-30/SW

Order No. 16.1150

EUL-30/WS

Order No. 16.1160



Pairs of universal PA speaker systems

- 100 V line technique, 2-way version
- EUL-80... with a 25 mm dome tweeter, EUL-60... and EUL-30... with an 11 mm dome tweeter
- Excellent sound quality
- 6-step power selector switch
- Black (SW) or white (WS) plastic cabinet
- Movable mounting bracket
- Mounting in corners possible as well due to bevelled shape of cabinets



Model	EUL-80/SW	EUL-80/WS	EUL-60/SW	EUL-60/WS	EUL-30/SW	EUL-30/WS
Frequency range	40-20,000 Hz	40-20,000 Hz	60-20,000 Hz	60-20,000 Hz	80-20,000 Hz	80-20,000 Hz
Power rating (100 V)	30/15/7.5/4/2 W _{RMS}	30/15/7.5/4/2 W _{RMS}	15/7.5/4/2/1 W _{RMS}	15/7.5/4/2/1 W _{RMS}	15/7.5/4/2/1 W _{RMS}	15/7.5/4/2/1 W _{RMS}
SPL (1 W/1 m)	89 dB	89 dB	89 dB	89 dB	87 dB	87 dB
Max. rated SPL	103 dB	103 dB	100 dB	100 dB	98 dB	98 dB
Dimensions	270x370x220 mm	270x370x220 mm	215x290x172 mm	215x290x172 mm	130x192x115 mm	130x192x115 mm
Weight (piece)	5.4 kg	5.4 kg	3.4 kg	3.4 kg	1.4 kg	1.4 kg
Connections	spring-load, speaker term.	spring-load, speaker term.	spring-load, speaker term.	spring-load, speaker term.	spring-load, speaker term.	spring-load, speaker term.
Mounting facility	movable mounting bracket	movable mounting bracket	movable mounting bracket	movable mounting bracket	movable mounting bracket	movable mounting bracket
System	bass-reflex	bass-reflex	bass-reflex	bass-reflex		

100 V Speaker Systems

ESP-250/WS

Order No. 16.2780

ESP-230/WS

Order No. 19.0010

ESP-215/WS

Order No. 19.9990



Weatherproof PA speaker systems, in a white plastic cabinet with protective aluminium grille.

- 100 V line technique
- Hose-proof
- Switchable to 8 Ω operation
- 5 power taps, 8 Ω connection and 100 V power selector switch
- 2-way system
- Stainless steel mounting bracket



SPEAKERS

Model	ESP-250/WS	ESP-230/WS	ESP-215/WS
Frequency range	80-20,000 Hz	80-20,000 Hz	100-20,000 Hz
Power capability, 100 V	50/40/30/20/10 W _{RMS}	30/20/10/5/2.5 W _{RMS}	15/10/5/2.5/1.5 W _{RMS}
Power capability, 8 Ω	50 W _{RMS} /100 W _{MAX}	50 W _{RMS} /100 W _{MAX}	30 W _{RMS} /60 W _{MAX}
SPL (1 W/m)	92 dB	92 dB	87 dB
Admiss. ambient temp.	-20 °C to +50 °C	-20 °C to +50 °C	-20 °C to +50 °C
Dimensions	157x260x170 mm	157x260x170 mm	98x195x105 mm
Weight	2.5 kg	1.8 kg	0.85 kg
Other features	spring-load. speaker term.	spring-load. speaker term.	spring-load. speaker term.

ESP-232/SW

Order No. 16.2600

ESP-232/WS

Order No. 16.2610



Weatherproof 2-way PA wall-mount speaker systems

- 100 V PA speaker system with an excellent sound
- 13 cm polypropylene bass-midrange speaker and dome tweeter
- 4 power taps
- Power selector switch with 8 Ω operating position
- Excellent efficiency for a speaker of such a compact size
- Available in black (SW) or white (WS) plastic with respectively lacquered aluminium grille, modern design
- Supplied with matching metal wall brackets



Model	ESP-232/SW	ESP-232/WS
Frequency range	75-20,000 Hz	75-20,000 Hz
Power capability, 100 V	30/20/10/5 W _{RMS}	30/20/10/5 W _{RMS}
Power capability, 8 Ω	50 W _{MAX} /30 W _{RMS}	50 W _{MAX} /30 W _{RMS}
SPL (1 W/m)	89 dB	89 dB
Admiss. ambient temp.	-20 °C to +50 °C	-20 °C to +50 °C
Dimensions	160x260x180 mm	160x260x180 mm
Weight	2.3 kg	2.3 kg
Other features	spring-load. speaker term.	spring-load. speaker term.

100 V Speaker Systems

EUL-10

Order No. 16.0330

EUL-10/WS

Order No. 16.0850

100V

100V

Universal PA speaker systems

- 100 V line technique, 2-way version
- Excellent sound quality
- 5-step power selector switch
- Diecast metal cabinet with black (EUL-10) or white (EUL-10/WS) textured coating and protective metal grille
- Movable mounting bracket



Model	EUL-10	EUL-10/WS
Frequency range	60-18,000 Hz	60-18,000 Hz
Power rating	10/5/2.5/1.25 W _{RMS}	10/5/2.5/1.25 W _{RMS}
Dimensions	118x220x115 mm	118x220x115 mm
Weight	2.2 kg	2.2 kg

Controls on the left side of the cabinet.



ESP-315/SW

Order No. 16.2860

ESP-315/WS

Order No. 16.2870

100V

8Ω

100V

8Ω

2-way PA wall-mount speaker systems

- 100 V PA speaker system with an excellent sound
- 2-way system with 10x15 cm bass-midrange speaker and 13 mm dome tweeter
- Power taps: 15/10/5/2.5 W
- Power selector switch with 8 Ω operating position
- Can be mounted horizontally or vertically
- Direction of sound radiation can individually be aligned
- Available in black (SW) or white (WS) plastic with respectively lacquered metal grille
- Supplied with wall brackets



Model	ESP-315/SW	ESP-315/WS
Frequency range	75-20,000 Hz	75-20,000 Hz
Power capability, 100 V	15/10/5/2.5 W _{RMS}	15/10/5/2.5 W _{RMS}
Power capability, 8 Ω	30 W _{MAX} /15 W _{RMS}	30 W _{MAX} /15 W _{RMS}
SPL (1 W/m)	90 dB	90 dB
Max. rated SPL	-	-
Admiss. ambient temp.	0-40 °C	0-40 °C
Dimensions	ø 133 mm x 280 mm	ø 133 mm x 280 mm
Weight	2.1 kg	2.1 kg
Other features	spring-load. speaker term.	spring-load. speaker term.

100 V Speaker Systems

EUL-42/WS

Order No. 16.1970



Pair of universal PA speaker systems

- 100 V line technique, 2-way version
- White plastic cabinet with metal front grille
- Integrated suspension device for wall mounting
- Movable mounting bracket



Model	EUL-42/WS
Frequency range	80-18,000 Hz
Power rating (100 V)	10/5/2.5 W _{RMS}
SPL (1 W/1 m)	87 dB
Max. rated SPL	97 dB
Dimensions	95x150x82 mm
Weight (piece)	960 g
Connections	spring-load, speaker term.
Mounting facility	2 x 1-hole wall holder 2 x 5 mm thread for mounting bracket
System	2-way

EUL-75/WS

Order No. 16.2500



PA speaker system

- 100 V line technique
- 6-step power selector switch
- Hi-fi full range speaker
- Excellent sound quality
- White grained wooden cabinet with metal front grille
- Standing speaker with wall holder



Model	EUL-75/WS
Frequency range	70-18,000 Hz
Power rating (100 V)	10/5/2.5/1.25/0.625 W _{RMS}
SPL (1 W/1 m)	86 dB
Max. rated SPL	96 dB
Dimensions	180x290x170 mm
Weight (piece)	3.8 kg
Connections	spring-load, speaker term.
Mounting facility	1 x wall holder
System	130

Active Speaker Systems

SOUND-21SET

Order No. 25.3760



Active subwoofer satellite system, 180 W_{MAX}, 100 W_{RMS} (complete system)

- Active system with a 3-channel amplifier integrated into the subwoofer
- USB interface for the direct connection to a PC
- Bass-reflex subwoofer with a 20 cm (8") speaker of long excursion
- Adjustable crossover frequency (50-150 Hz)
- Volume control
- High-quality bass-reflex MDF cabinet (body in black wood veneer look, front with black lacquered surface)
- 10 cm bass-midrange speaker with glass fibre cone and 25 mm soft dome tweeter
- The amplifier is equipped with a stereo RCA input and a USB interface



1x ACTIVE
2x PASSIVE

SOUND-65/SW

Order No. 25.0680



Pair of high-quality active speakers, 2 x 80 W_{MAX}, 2 x 50 W_{RMS} (30+20 W each speaker system)

- 2-way active switching for each speaker system with separate power amplifiers for bass speaker and tweeter (bi-amping)
- High-quality bass-reflex MDF cabinet with black lacquered surface
- 16 cm bass-midrange speaker with glass fibre cone and 25 mm soft dome tweeter
- Due to a switchable adjustment of the tweeter power amplifier, a fine adjustment of the tweeter level is possible without any losses in the level (-2/-1/0/+1 dB)
- Each speaker system is equipped with an unbalanced RCA input, a balanced XLR input and a jack input (6.3 mm) which can all be adjusted via gain control



2x ACTIVE

Model	SOUND-21SET	SOUND-65/SW
Frequency range	30-20,000 Hz	42-20,000 Hz
Amplifier power	1 x 100 W _{MAX} , 60 W _{RMS} (subwoofer) 2 x 40 W _{MAX} , 2 x 20 W _{RMS} (satellites)	80 W _{MAX} , 50 W _{RMS} (each speaker system)
Inputs	350 mV/16 kΩ (unbal.)	720 mV/10 kΩ (bal.) 720 mV/7.7 kΩ (unbal.)
SPL (1 W/1 m)	85 dB	86 dB
Max. rated SPL	98 dB	102 dB
Admiss. ambient temp.	0-40 °C	0-40 °C
Power supply	230 V~/50 Hz/180 VA	230 V~/50 Hz/120 VA
Dimensions (WxHxD)	292x320x320 mm (subwoofer) 170x240x180 mm (satellite)	230x325x275 mm
Weight	10 kg (subwoofer) 2 x 2.5 kg (satellites)	2 x 7.8 kg
Connections	1 x RCA (L/R), unbal., IN 1 x USB 2 x spring-load. speaker term. for satellites	1 x RCA, unbal., IN (each speaker system) 1 x XLR, bal., IN (each speaker system) 1 x 6.3 mm jack, bal., IN (each speaker system)

HiFiTest 04/2012

Price-performance: excellent. Overall score: 1.3. This speaker is great fun when listening to music. With their crystal clear and dynamic sound and the practice-orientated features, these active speakers provide a professional performance. The SOUND-65/SW from IMG Stage Line are available at an incredibly attractive price per pair which is almost unbeatable. Thus, they are totally recommendable!



SOUND-4C

Order No. 25.4040



Front covers (pair), for speaker systems, e.g. SOUND-4USB and SOUND-21SET (satellites).

- Front frames, covered with speaker grille cloth
- To be attached via supplied self-adhesive hook and loop fasteners
- Dimensions: 150x222x10 mm



SOUND-6C

Order No. 25.4050



Front covers (pair), for speaker systems, e.g. SOUND-65/SW.

- Front frames, covered with speaker grille cloth
- To be attached via supplied self-adhesive hook and loop fasteners
- Dimensions: 223x295x12 mm

Active Speaker Systems

MKA-80SET/SW

Order No. 13.1600

MKA-80SET/WS

Order No. 13.1610

PAAR
PAIR 2 x 30
W_{MAX}

PAAR
PAIR 2 x 30
W_{MAX}

**Active 2-way stereo speaker systems,
2 x 30 W_{MAX}, 2 x 20 W_{RMS}**

- The set consists of one active speaker system and one passive speaker system. The passive speaker system is connected to the active speaker system via spring-loaded speaker terminals
- Active speaker system with integrated 2-channel amplifier, stereo RCA input, volume control, 2-way tone control, built-in PSU and removable mains cable with shrouded 3-pin IEC plug
- 20 cm (8") bass speaker system and dome tweeter
- Black (SW) or white (WS) plastic cabinet
- Movable mounting bracket



SPEAKERS

Active

MKA-60SET/SW

Order No. 13.1580

MKA-60SET/WS

Order No. 13.1590

PAAR
PAIR 2 x 25
W_{MAX}

PAAR
PAIR 2 x 25
W_{MAX}

**Active 2-way stereo speaker systems,
2 x 25 W_{MAX}, 2 x 15 W_{RMS}**

- The set consists of one active speaker system and one passive speaker system. The passive speaker system is connected to the active speaker system via spring-loaded speaker terminals
- Active speaker system with integrated 2-channel amplifier, stereo RCA input, volume control and 2-way tone control, built-in PSU with 3-pin IEC jack
- 16 cm (6½") bass speaker system and dome tweeter
- Black (SW) or white (WS) plastic cabinet
- Movable mounting bracket



Active

Model	MKA-80SET/SW	MKA-80SET/WS	MKA-60SET/SW	MKA-60SET/WS
Frequency range	35-20,000 Hz	35-20,000 Hz	45-20,000 Hz	45-20,000 Hz
Amplifier power	2 x 30 W _{MAX} /2 x 20 W _{RMS}	2 x 30 W _{MAX} /2 x 20 W _{RMS}	2 x 25 W _{MAX} /2 x 15 W _{RMS}	2 x 25 W _{MAX} /2 x 15 W _{RMS}
Inputs	400 mV/10 kΩ	400 mV/10 kΩ	400 mV/10 kΩ	400 mV/10 kΩ
SPL (1 W/1 m)	89 dB each speaker system	89 dB each speaker system	89 dB each speaker system	89 dB each speaker system
Max. rated SPL	102 dB each speaker system	102 dB each speaker system	100 dB each speaker system	100 dB each speaker system
Admiss. amb. temp.	0-40 °C	0-40 °C	0-40 °C	0-40 °C
Power supply	230 V~/50 Hz/100 VA	230 V~/50 Hz/100 VA	230 V~/50 Hz/75 VA	230 V~/50 Hz/75 VA
Dimensions (WxHxD)	270x365x220 mm	270x365x220 mm	220x293x170 mm	220x293x170 mm
Weight	14 kg (pair)	14 kg (pair)	8 kg (pair)	8 kg (pair)
Connections	1 x RCA L/R (active speaker system only) spring-load. speaker term. (link) (both speaker systems)	1 x RCA L/R (active speaker system only) spring-load. speaker term. (link) (both speaker systems)	1 x RCA L/R (active speaker system only) spring-load. speaker term. (link) (both speaker systems)	1 x RCA L/R (active speaker system only) spring-load. speaker term. (link) (both speaker systems)

Active Speaker Systems

MKA-60/SW

Order No. 13.1670

MKA-60/WS

Order No. 13.1680



Active 2-way speaker systems, 25 W_{MAX}, 15 W_{RMS}

- Active speaker system with integrated amplifier, bal. XLR feed-through input, volume control, 2-way tone control and built-in PSU
- 16 cm (6½") bass speaker system and dome tweeter
- Black (SW) or white (WS) plastic cabinet
- Movable mounting bracket



Active

MKA-40SET/SW

Order No. 13.2240



Compact active 2-way stereo speaker system, 2 x 15 W_{MAX}, 2 x 10 W_{RMS}

Active speaker system of a compact size with a good sound quality. Suitable for general applications, e.g. media presentations with moderate level requirements or as high-quality PC speakers.

- The set consists of one active speaker system and one passive speaker system (bass-reflex system)
- The passive speaker system is connected to the active speaker system via spring-loaded speaker terminals
- Active speaker system with integrated 2-channel amplifier, stereo RCA input, volume control and 2-way tone control
- Magnetic shielding
- 10 cm (4") bass system, magnetically shielded and dome tweeter with neodymium magnet
- Black plastic cabinet
- Two 6.3 mm (¼") threaded inserts at the bottom
- Supplied with external PSU



Model	MKA-60/SW	MKA-60/WS	MKA-40SET/SW
Frequency range	45-20,000 Hz	45-20,000 Hz	70-20,000 Hz
Amplifier power	25 W _{MAX} /15 W _{RMS}	25 W _{MAX} /15 W _{RMS}	2 x 15 W _{MAX} , 2 x 10 W _{RMS}
Inputs	250 mV/10 kΩ	250 mV/10 kΩ	650 mV/4.5 kΩ (unbal.)
SPL (1 W/1 m)	89 dB	89 dB	87 dB
Max. rated SPL	100 dB	100 dB	97 dB
Admiss. ambient temp.	0-40 °C	0-40 °C	0-40 °C
Power supply	230 V~50 Hz/40 VA	230 V~50 Hz/40 VA	via suppl. PSU
Dimensions (WxHxD)	220x293x170 mm	220x293x170 mm	133x206x128 mm
Weight	4.2 kg	4.2 kg	3.6 kg (pair)
Connections	XLR in/out, bal. RCA in/out	XLR in/out, bal. RCA in/out	1 x RCA L/R (active speaker system only) spring-load. speaker term. (link) (both speaker systems)

Low-impedance Speaker Systems

MKS-88/SW

Order No. 13.1150

MKS-88/WS

Order No. 13.1160

MKS-64/SW

Order No. 13.1130

MKS-64/WS

Order No. 13.1140

MKS-34/SW

Order No. 13.1110

MKS-34/WS

Order No. 13.1120

8Ω	125 W _{MAX}	PAIR
8Ω	125 W _{MAX}	PAIR
4Ω	90 W _{MAX}	PAIR
4Ω	90 W _{MAX}	PAIR
4Ω	40 W _{MAX}	PAIR
4Ω	40 W _{MAX}	PAIR

Pairs of 2-way speaker systems

- MKS-88... in 8 Ω, MKS-64... and MKS-34... in 4 Ω
- Dome tweeter
- Excellent sound quality
- Black (SW) or white (WS) plastic cabinet
- Movable mounting bracket
- Mounting in corners possible as well due to bevelled shape of cabinets



SPEAKERS

Model	MKS-88/SW	MKS-88/WS	MKS-64/SW	MKS-64/WS	MKS-34/SW	MKS-34/WS
Music power	125 W _{MAX}	125 W _{MAX}	90 W _{MAX}	90 W _{MAX}	45 W _{MAX}	45 W _{MAX}
Power rating	85 W _{RMS}	85 W _{RMS}	60 W _{RMS}	60 W _{RMS}	30 W _{RMS}	30 W _{RMS}
Max. frequency range	40-20,000 Hz	40-20,000 Hz	60-20,000 Hz	60-20,000 Hz	80-20,000 Hz	80-20,000 Hz
Impedance	8 Ω	8 Ω	4 Ω	4 Ω	4 Ω	4 Ω
SPL (1 W/1 m)	89 dB	89 dB	89 dB	89 dB	87 dB	87 dB
Max. rated SPL	107 dB	107 dB	106 dB	106 dB	101 dB	101 dB
Dimensions	270x370x220 mm	270x370x220 mm	215x290x172 mm	215x290x172 mm	130x192x115 mm	130x192x115 mm
Weight	5.4 kg	5.4 kg	3.4 kg	3.4 kg	1.3 kg	1.3 kg
Connections	spring-load, speaker term.	spring-load, speaker term.	spring-load, speaker term.	spring-load, speaker term.	spring-load, speaker term.	spring-load, speaker term.
Mounting facility	2 x M6 thread	2 x M6 thread	2 x M6 thread	2 x M6 thread	for wall hooks	for wall hooks

Low-impedance Speaker Systems

MKS-8PRO

Order No. 13.1770



Pair of high-performance PA speakers, 180 W_{MAX}, 100 W_{RMS} each speaker system

2-way speaker systems, each in an ABS cabinet (bass-reflex) of modern design, 20 cm bass speaker and dome tweeter. Both the sound with a very extended frequency response and the volume capability are absolutely convincing. These speakers are valuable solutions for PA applications in function rooms or conference rooms, for presentations and on parties. Supplied with mounting brackets for wall mounting.

MKS-6PRO

Order No. 13.1760

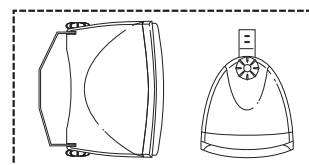


Pair of high-performance PA speakers, 150 W_{MAX}, 80 W_{RMS} each speaker system

2-way speaker systems, each in an ABS cabinet (bass-reflex) of modern design, 16 cm bass speaker and dome tweeter. A convincing sound for most varying music, the volume capability is outstanding due to the excellent efficiency. The MKS-6PRO is a perfect solution for PA applications in function rooms or conference rooms and for presentations. Supplied with mounting brackets.



Model	MKS-8PRO	MKS-6PRO
Music power	180 W _{MAX}	150 W _{MAX}
Power rating	100 W _{RMS}	80 W _{RMS}
Max. frequency range	40-21,000 Hz	45-21,000 Hz
Impedance	8 Ω	8 Ω
SPL (1 W/1 m)	91 dB	93 dB
Max. rated SPL	111 dB	112 dB
Dimensions	265x374x285 mm	230x350x240 mm
Weight	5.7 kg	4.5 kg
Connections	speaker screw terminal	speaker screw terminal
Mounting facility	mounting bracket	mounting bracket



MKS-48/WS

Order No. 13.2130



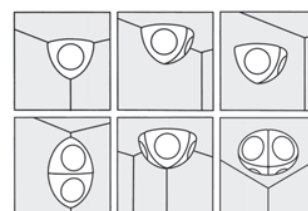
Pair of wall/ceiling/corner mount speaker systems, 30 W_{MAX}, 8 Ω

These really universally mountable speakers allow a perfect integration into most versatile indoor mounting positions. Interesting possibilities due to the optional creation of a cluster with 1-4 elements, from ceiling suspension in a corner to a hemisphere of wide radiation in the middle of the wall or ceiling. The sound of the pure white speakers is adjusted in such a precise way that it provides a complete sound of high quality, no matter in which position the speakers are placed.

- White ABS cabinet
- High-quality 10 cm full range speaker
- Variable support and mounting system



Model	MKS-48/WS
Impedance	8 Ω
Frequency range	100-20,000 Hz
Power rating	30 W _{MAX} , 15 W _{RMS}
SPL (1 W/1 m)	87 dB
Dimensions	195x145x140 mm
Weight	1.5 kg



Low-impedance Speaker Systems

MKS-248/WS

Order No. 13.2050



Pair of 2-way wall-mount design speaker systems, 100 W_{MAX}, 8 Ω

- High-performance PA speaker systems (bass-reflex) of a top design with a perfect sound
- Each equipped with 2 x 10 cm polypropylene bass-midrange speaker and one high-quality dome tweeter
- With an adequate number of the speaker systems, the good efficiency and the high power capability allow clearly increased volume levels. The sound quality even meets hi-fi requirements
- Available in white plastic with respectively lacquered aluminium grille
- Supplied with a matching metal wall bracket (movable and tiltable)

Model	MKS-248/WS
Impedance	8 Ω
Frequency range	70-20,000 Hz
Crossover frequency	4,000 Hz
Power rating	100 W _{MAX} 60 W _{RMS}
SPL (1 W/1 m)	89 dB
Dimensions	150x300x190 mm
Weight	3.4 kg
Other features	

MKS-232/SW

Order No. 13.2160



MKS-232/WS

Order No. 13.2170



Weatherproof pairs of 2-way wall-mount speaker systems, 50 W_{MAX}, 8 Ω

- PA speaker systems with an excellent sound
- 13 cm polypropylene bass-midrange speaker and dome tweeter
- Excellent efficiency for speakers of such a compact size
- Available in black (SW) or white (WS) plastic with respectively lacquered aluminium grille, modern design
- Supplied with matching metal wall brackets

Model	MKS-232/SW	MKS-232/WS
Music power	50 W _{MAX}	50 W _{MAX}
Power rating	30 W _{RMS}	30 W _{RMS}
Max. frequency range	75-20,000 Hz	75-20,000 Hz
Impedance	8 Ω	8 Ω
SPL (1 W/1 m)	89 dB	89 dB
Max. rated SPL	103 dB	103 dB
Admiss. ambient temp.	-20 °C to +50 °C	-20 °C to +50 °C
Dimensions	160x260x180 mm	160x260x180 mm
Weight	1.8 kg	1.8 kg
Connections	spring-load, speaker term.	speaker screw terminal
Mounting facility	mounting bracket	mounting bracket

MKS-42/SW

Order No. 13.1520



MKS-42/WS

Order No. 13.1530



Pairs of universal 2-way speaker systems, 40 W_{MAX}, 4 Ω

- Black (SW) or white (WS) plastic cabinet with metal front grille
- Integrated holder for wall mounting
- Movable mounting bracket

Model	MKS-42/SW	MKS-42/WS
Impedance	4 Ω	4 Ω
Frequency range	80-18,000 Hz	80-18,000 Hz
Crossover frequency	-	-
Power rating	40 W _{MAX} 20 W _{RMS}	40 W _{MAX} 20 W _{RMS}
SPL (1 W/1 m)	87 dB	87 dB
Dimensions	150x95x82 mm	150x95x82 mm
Weight	1.4 kg	1.4 kg
Other features	spring-load, speaker term., 2 x 1-hole wall holder	spring-load, speaker term., 2 x 1-hole wall holder

100 V Column Speakers

ETS-442TW/WS

Order No. 16.3140

ETS-432TW/WS

Order No. 16.3130

ETS-422TW/WS

Order No. 16.3120



Weatherproof PA column speakers, with a top-quality sound.

- Weatherproof and hose-proof, extruded aluminium cabinet
- 100 V line technique
- 2-way version (with additional integrated tweeter for a clearly improved sound)
- Integrated crossover network
- Aluminium front grille
- Supplied with a robust tiltable and movable aluminium wall bracket
- Connection via cable with 4 power taps



ETS-240TW/WS

Order No. 16.2960

ETS-220TW/WS

Order No. 16.2950

ETS-210TW/WS

Order No. 16.2940



PA column speakers, in extruded aluminium cabinets.

- Weatherproof and hose-proof
- 100 V line technique
- 2-way version (with additional integrated tweeters for a clearly improved sound)
- Connection cable with 5-step power taps
- 2 x M6 threaded bushing
- Aluminium front grille
- Supplied with mounting brackets



Model	ETS-442TW/WS	ETS-432TW/WS	ETS-422TW/WS	ETS-240TW/WS	ETS-220TW/WS	ETS-210TW/WS
Frequency range	110-20,000 Hz	120-20,000 Hz	130-20,000 Hz	150-20,000 Hz	150-20,000 Hz	170-20,000 Hz
Number of speakers	8+1	6+1	4+1	8+4	4+2	2+1
Power rating	40/20/10/5 W _{RMS}	30/15/7.5/3.75 W _{RMS}	20/10/5/2.5 W _{RMS}	40/30/20/10/5 W _{RMS}	20/15/10/5/2.5 W _{RMS}	10/5/2.5/1.25/0.63 W _{RMS}
SPL (1 W/1 m)	93 dB	93 dB	92 dB	90 dB	89 dB	86 dB
Admiss. ambient temp.	-20 °C to +50 °C	-20 °C to +50 °C	-20 °C to +50 °C	-20 °C to +50 °C	-20 °C to +50 °C	-20 °C to +50 °C
Dimensions	124x1,016x108 mm	124x813x108 mm	124x610x108 mm	80x846x70 mm	80x469x70 mm	80x280x70 mm
Weight	7.7 kg	5.6 kg	4 kg	2.8 kg	1.7 kg	1 kg

100 V Column Speakers

ETS-230TW/WS

Order No. 16.2110



ETS-215TW/WS

Order No. 16.2100



PA column speakers, in extruded aluminium cabinets, with top and bottom plates of aluminium.

- 100 V line technique
- 2-way version (with additional integrated tweeters for a clearly improved sound)
- Integrated crossover network
- 5-step power selector switch
- 2 x M6 threaded bushing
- Metal front grille
- Supplied with mounting brackets
- Connection via cable, 2 cores

ETS-230TW/WS with 4 tweeters

ETS-215TW/WS with 2 tweeters



ETS-230/WS

Order No. 16.1310



ETS-215/WS

Order No. 16.1300

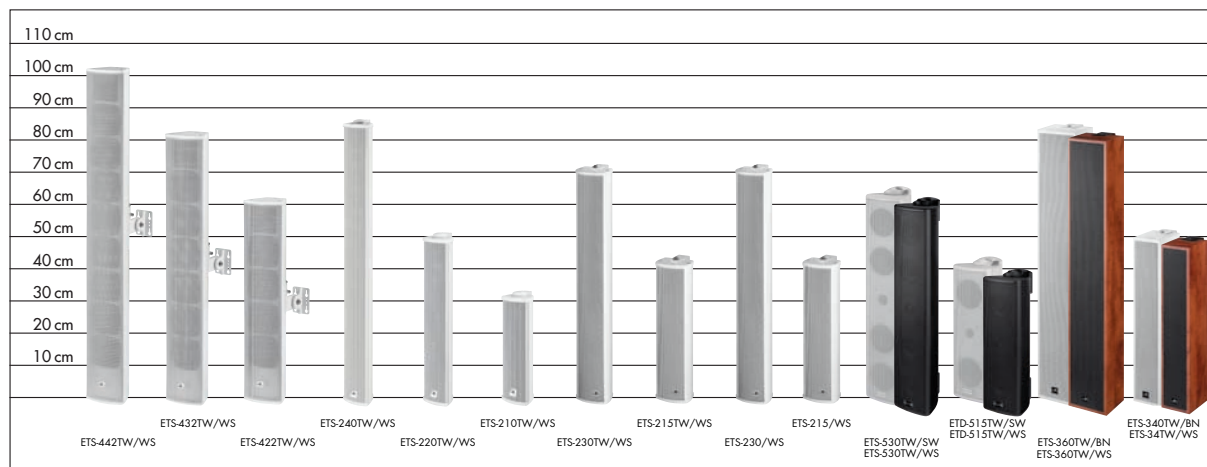


PA column speakers, in extruded aluminium cabinets, with top and bottom plates of aluminium.

- 100 V line technique
- 5-step power selector switch
- 2 x M6 threaded bushing
- Metal front grille
- Supplied with mounting brackets
- Connection via cable, 2 cores



Model	ETS-230TW/WS	ETS-215TW/WS	ETS-230/WS	ETS-215/WS
Frequency range	200-20,000 Hz	250-20,000 Hz	200-15,000 Hz	250-15,000 Hz
Number of speakers	8+4	4+2	8	4
Power rating	20/10/5/2.5 W _{RMS}	12/6/3/1.5 W _{RMS}	30/15/7.5/3.75 W _{RMS}	15/7.5/3.75/2 W _{RMS}
SPL (1 W/1 m)	94 dB	90 dB	95 dB	92 dB
Dimensions	105x700x75 mm	105x410x75 mm	105x687x85 mm	105x405x85 mm
Weight	4.2 kg	2.6 kg	4.1 kg	2.5 kg



100 V Column Speakers



Certification guaranteed!

"EN-54? With the solutions from MONACOR®, I will be able to meet the requirements!"

Jens Neumann, 43, electrician



The new product line around the audio management controller EVA-16MEN allows you to choose: individual products for self-installation or a fully equipped voice alarm system according to your individual specifications which complies with EN 54-16.



ETS-530TW/SW

Order No. 16.2650

100V 8Ω

ETS-530TW/WS

Order No. 16.2660

100V 8Ω

ETS-515TW/SW

Order No. 16.2620

100V 8Ω

ETS-515TW/WS

Order No. 16.2630

100V 8Ω

PA column speakers

- 100 V line technique or 8 Ω operation
- 2-way version (with additional integrated tweeter for a clearly improved sound)
- Integrated crossover network
- 6-step power selector switch with 8 Ω switching
- 2 x 6 mm threaded bushing
- Plastic cabinet and protective metal grille in black (SW) or white (WS)
- Supplied with mounting brackets
- Connection via spring-loaded speaker terminal



Tweeter

Model	ETS-530TW/SW	ETS-530TW/WS	ETS-515TW/SW	ETS-515TW/WS
Frequency range	85-20,000 Hz	85-20,000 Hz	90-20,000 Hz	90-20,000 Hz
Number of speakers	4+1	4+1	2+1	2+1
Power rating	30/15/7.5/4/2 W _{RMS} (100 V) 60 W _{MAX} /30 W _{RMS} (8 Ω)	30/15/7.5/4/2 W _{RMS} (100 V) 60 W _{MAX} /30 W _{RMS} (8 Ω)	15/7.5/4/2/1 W _{RMS} (100 V) 30 W _{MAX} /15 W _{RMS} (8 Ω)	15/7.5/4/2/1 W _{RMS} (100 V) 30 W _{MAX} /15 W _{RMS} (8 Ω)
SPL (1 W/1 m)	89 dB	89 dB	87 dB	87 dB
Dimensions	128x620x140 mm	128x620x140 mm	128x385x140 mm	128x385x140 mm
Weight	5 kg	5 kg	3.5 kg	3.5 kg

100 V Column Speakers

The New Generation of Column Speakers from MONACOR: All the advantages of a column speaker (shape, directional characteristic and mounting) are now combined with an excellent sound quality and a particularly high level stability. With the 2-way ETS speakers in a wooden cabinet (BN: high-quality decorative wood design, WS: white decorative surface with wood pattern), most varying requirements can be met by these speaker systems, like a very good speech intelligibility and at the same time an optimised music reproduction of the full range.

ETS-360TW/BN

Order No. 16.2260

100V

ETS-360TW/WS

Order No. 16.2270

100V

High-end column speakers, (indoors), 100 V.

Column speakers in a wooden cabinet of compact size, coated with high-quality foils in decorative wood pattern (BN: natural brown, WS: white with structured wood pattern), 2½-way technology with tweeter (25 mm textile dome), clearly extended frequency range compared with standard full range column speakers. The ETS-360... speakers impress by an enormously dynamic and complete sound which is convincing due to a good speech intelligibility and a surpris-

ingly great sound also at higher volume levels.

- 2 bass speakers, 4 bass-midrange speakers, 1 tweeter
- Spring-loaded terminals with 3 power taps
- 2 x M8 threaded bushing
- Supplied with mounting brackets
- Metal front grille

Tweeter

At PA column speakers with a weight of more than 5 kg, both of the supplied mounting brackets must be used for safety reasons!

ETS-340TW/BN

Order No. 16.2240

100V

ETS-340TW/WS

Order No. 16.2250

100V

High-end column speakers, (indoors), 100 V.

Column speakers in a wooden cabinet of compact size, coated with high-quality foils in decorative wood pattern (BN: natural brown, WS: white with structured wood pattern), 2½-way technology with tweeter (25 mm textile dome), clearly extended frequency range compared with standard full range column speakers. The sound is ideally matched to the reproduction of both

music and vocals.

- 4 bass speakers, 2 bass-midrange speakers, 1 tweeter
- Spring-loaded terminal with 3 power taps
- 2 x M8 threaded bushing
- Supplied with mounting brackets
- Metal front grille

Tweeter



SPEAKERS



Model	ETS-360TW/BN	ETS-360TW/WS	ETS-340TW/BN	ETS-340TW/WS
Frequency range	90-19,000 Hz	90-19,000 Hz	100-19,000 Hz	100-19,000 Hz
Number of speakers	6+1	6+1	6+1	6+1
Power rating	60/30/15 W _{RMS}	60/30/15 W _{RMS}	40/20/10 W _{RMS}	40/20/10 W _{RMS}
SPL (1 W/1 m)	94 dB	94 dB	92 dB	92 dB
Dimensions	135x825x110 mm	135x825x110 mm	95x500x120 mm	95x500x120 mm
Weight	7.3 kg	7.3 kg	3.5 kg	3.5 kg

100 V Speaker Systems

This series of speaker systems including subwoofer from MONACOR sets standards in the modern PA technology: high-quality lacquered cabinets of a perfect design, lightweight but stable and of high power capability, featuring a nice sound and a high efficiency, the EUL-2... in the professional 100 V technique. Real PA speaker systems for versatile applications at a particularly favourable price.

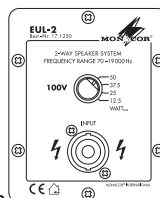
EUL-2

Order No. 17.1250



PA speaker system in 100 V line technique

Lacquered cabinet, equipped with a 20 cm (8") double bass speaker of high power capability and a dyn. 25 mm (1") horn tweeter, well-balanced and dynamic sound, SPEAKON connection, rotary switch for power selection, stand sleeve. A speaker system of an appealing design, fully efficient for speech applications and light music and vastly superior to customary 100 V speakers. A subwoofer support is useful for bass reproductions of high requirements (e.g. with EUL-2SUB). This speaker can be integrated into any existing or new 100 V system by simply connecting it in parallel, as long as the amplifier features the respective power reserves!



EUL-2SUB

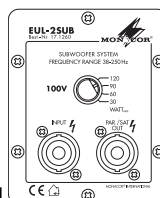
Order No. 17.1260



Matching adapter piece for speaker system PAST-12/SW (100 cm) is available at option.

Innovative PA subwoofer system in 100V line technique

Lacquered cabinet, equipped with a 30 cm (12") bass speaker for a deep and dynamic bass reproduction, SPEAKON connections (input and sat out/par. out), stand sleeve, of an appealing design. The high efficiency perfectly matches the EUL-2 but it is also suitable as an addition to many other 100 V systems, of course. The built-in crossover network (low-pass) allows a reproduction of bass frequencies which can normally not be located, thus the EUL-2SUB is an ideal solution for numerous 100 V systems where the bass reproduction is not powerful enough (e.g. at many column speakers or ceiling speaker systems). The EUL-2SUB can be placed anywhere in the room and simply be connected in parallel to the 100 V line, as long as the reserves of the amplifier are sufficient for it.



Model	EUL-2	EUL-2SUB
Power capabilities		
100 V operation	50/37.5/25/12.5 W _{RMS}	120/90/60/30 W _{RMS}
General information		
Frequency range	70-19,000 Hz	38-250 Hz
SPL (1 W/1 m)	95 dB	95 dB
Admiss. ambient temp.	0-40 °C	0-40 °C
Dimensions	320x485x250 mm	420x430x445 mm
Weight	8.7 kg	19.5 kg
Connections	1 x SPEAKON	1 x SPEAKON IN, 1 x SPEAKON par. out/sat out

ESP-270P

Order No. 24.7010



PA speaker system, with black plastic coating.

- 100 V line technique
- Switchable to 8 Ω operation
- 2-way bass-reflex system with two 18 cm (7") bass-midrange speakers and a tweeter horn with ferrofluid
- 4 power taps, 8 Ω connection and 100 V power selector switch
- Prepared for mounting onto stands with supporting plate

Model	ESP-270P
Frequency range	50-15,000 Hz
Power capability, 100 V	50/37.5/25/12.5 W _{RMS}
Power capability, 8 Ω	100 W _{RMS} /200 W _{MAX}
SPL (1 W/m)	94 dB
Admiss. ambient temp.	0-40 °C
Dimensions	480x290x240 mm
Weight	9 kg
Other features	6 x screw terminal



Weatherproof Speaker Systems

Available by popular demand: weatherproof PA speakers with IP classification. Exactly the right speakers whenever a high sound quality, a high volume capability and a respective resistance to all weather conditions are required. Ideally

suited for permanent open-air applications, e.g. at fairground attractions, PA applications in pedestrian areas, at sports facilities and wherever a weather-protected installation of the speakers is not possible.

SPEAKERS



PAB-120WP/SW

Order No. 25.3750



Weatherproof high-performance PA speaker system, 120 W_{RMS}

- High-performance 2-way bass-reflex system with cabinet made of ABS plastic
- 100 V line technique
- 30 cm (12") PA bass speaker with impregnated paper cone
- 25 mm (1") horn tweeter system
- Excellent sound characteristics
- Front grille with water-repellent gauze
- Speaker in and parallel out
- Metal parts made of stainless steel
- 4 x M10 threaded insert each at the top and bottom for suspended installation
- Stand sleeve



PAB-12WP/SW

Order No. 25.3740



Weatherproof high-performance PA speaker system, 400 W_{MAX}/200 W_{RMS}, 8 Ω

- High-performance 2-way bass-reflex system with cabinet made of ABS plastic
- 30 cm (12") PA bass speaker with impregnated paper cone
- 25 mm (1") horn tweeter system
- Excellent sound characteristics
- Front grille with water-repellent gauze
- Speaker in and parallel out
- Metal parts made of stainless steel
- 4 x M10 threaded insert each at the top and bottom for suspended installation
- Stand sleeve

Model	PAB-120WP/SW	PAB-12WP/SW
Frequency range	42-20,000 Hz	42-20,000 Hz
Power capability, 100 V	120/60/30 W _{RMS}	-
Power capability, 8 Ω	-	400 W _{MAX} , 200 W _{RMS}
SPL (1 W/m)	98 dB	98 dB
Max. rated SPL	119 dB	121 dB
Type of speaker	300	300
Admiss. ambient temp.	-10 °C to +40 °C	-10 °C to +40 °C
Dimensions	370x655x410 mm	370x655x410 mm
Weight	21 kg	20 kg
Other features	2 x SPEAKER par. in/out bass-reflex	2 x SPEAKER par. in/out bass-reflex

Weatherproof Speaker Systems

Available by popular demand: weatherproof PA speakers with IP classification. Exactly the right speakers whenever a high sound quality, a high volume capability and a respective resistance to all weather conditions are required. Ideally suited for permanent open-air applications, e.g. at fairground attractions, PA applications in pedestrian areas, at sports facilities and wherever a weather-protected installation of the speakers is not possible.

PAB-82WP/WS

Order No. 25.3590



Weatherproof high-performance PA speaker system, 120 W_{RMS} in 100 V operation or up to 240 W_{MAX}/120 W_{RMS} in 8 Ω operation

- High-performance 2-way coaxial speaker system with cabinet made of ABS plastic
- 100 V operation or 8 Ω operation, selectable
- 20 cm (8") PA coaxial system with impregnated paper cone
- Coaxially integrated 25 mm (1") horn tweeter
- Excellent sound characteristics
- Front grille with water-repellent gauze
- Recessed connection terminal with cover plate and high-strength cable gland
- Speaker in and parallel out, screw terminal
- Metal parts and wall bracket made of stainless steel



PAB-52WP/WS

Order No. 25.3580



Weatherproof high-performance PA speaker system, 50 W_{RMS} in 100 V operation or up to 100 W_{MAX}/50 W_{RMS} in 4 Ω operation

- Compact wideband bass-reflex system with cabinet made of ABS plastic
- 100 V or 4 Ω operation, selectable
- 13 cm (5") high-quality full range speaker with aluminium cone
- Excellent sound characteristics
- Front grille with water-repellent gauze
- Recessed connection terminal with cover plate and high-strength cable gland
- Metal parts and wall bracket made of stainless steel



Model	PAB-82WP/WS	PAB-52WP/WS
Frequency range	50-20,000 Hz	60-18,000 Hz
Power capability, 100 V	120/60/30 W _{RMS}	50/25/12.5 W _{RMS}
Power capability, 8 Ω	240 W _{MAX} , 120 W _{RMS}	-
SPL (1 W/m)	96 dB	87 dB
Max. rated SPL	117 dB	104 dB
Type of speaker	200	130
Admiss. ambient temp.	-10 °C to +40 °C	-10 °C to +40 °C
Dimensions	280x280x270 mm	200x200x190 mm
Weight	9.5 kg	5.1 kg
Other features	2 x SPEAKER par. in/out screw terminal mounting bracket, bass-reflex	screw terminal mounting bracket, bass-reflex

Weatherproof Speaker Systems

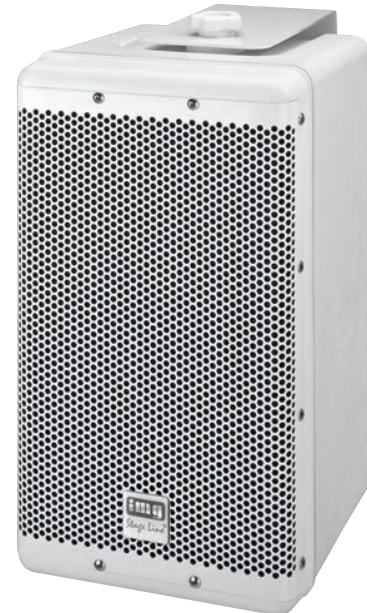
PAB-8WP/WS

Order No. 25.3570



Weatherproof high-performance PA speaker system, 120 W_{RMS} in 100 V operation or up to 240 W_{MAX}/120 W_{RMS} in 8 Ω operation

- High-performance 2-way bass-reflex system with cabinet made of ABS plastic
- 100 V or 8 Ω operation, selectable
- 20 cm (8") PA bass speaker with impregnated paper cone
- 25 mm (1") horn tweeter system
- Excellent sound characteristics
- Front grille with water-repellent gauze
- Recessed connection terminal with cover plate and high-strength cable gland
- Speaker in and parallel out, screw terminal
- Metal parts and wall bracket made of stainless steel



PAB-6WP/WS

Order No. 25.3560



Weatherproof high-performance PA speaker system, 100 W_{RMS} in 100 V operation or up to 180 W_{MAX}/100 W_{RMS} in 8 Ω operation

- Compact 2-way bass-reflex system with cabinet made of ABS plastic
- 100 V or 8 Ω operation, selectable
- 16 cm bass speaker with coated carbon fibre cone
- 30 mm dome tweeter with horn front attachment
- Excellent sound characteristics
- Front grille with water-repellent gauze
- Recessed connection terminal with cover plate and high-strength cable gland
- Metal parts and wall bracket made of stainless steel

PROSOUND 05/2011

"The cabinets give a solid impression ... and meet IP45 requirements. All four speaker systems are suitable for pleasant background music ... the large PAB-8WP/WS is capable of quite high volume levels ... however, the small ones should not be underestimated ... these speaker systems are impressive and the price is quite reasonable for weatherproof speaker systems."



Model	PAB-8WP/WS	PAB-6WP/WS
Frequency range	48-20,000 Hz	42-19,000 Hz
Power capability, 100 V	120/60/30 W _{RMS}	100/50/25 W _{RMS}
Power capability, 8 Ω	240 W _{MAX} , 120 W _{RMS}	180 W _{MAX} , 100 W _{RMS}
SPL (1 W/m)	96 dB	90 dB
Max. rated SPL	117 dB	110 dB
Type of speaker	200	165
Admiss. ambient temp.	-10 °C to +40 °C	-10 °C to +40 °C
Dimensions	240x430x250 mm	200x370x240 mm
Weight	13.1 kg	7.1 kg
Other features	2 x SPEAKER par in/out screw terminal mounting bracket, bass-reflex	screw terminal mounting bracket, bass-reflex

Garden Speakers

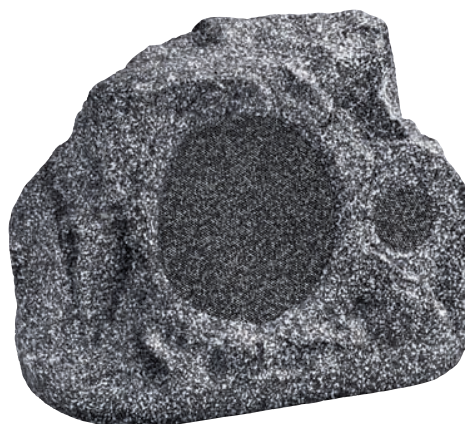
GLS-351/GR

Order No. 16.3080



Weatherproof PA garden speaker "Rock", stone look, for general PA applications, e.g. in gardens, hotels, restaurants and pubs.

- 100 V line technique or 8 Ω operation
- Robust, glass fibre reinforced plastic cabinet
- 2-way speaker system (200 mm bass speaker and 13 mm tweeter)
- Integrated audio transformer with 4 power taps (30/20/10/5 W_{RMS})
- Connection cable with luster terminals



GLS-301/GR

Order No. 16.3070



Weatherproof PA garden speaker "Rock", stone look, for general PA applications, e.g. in gardens, hotels, restaurants and pubs.

- Omnidirectional radiation
- 100 V line technique or 8 Ω operation
- Robust, glass fibre reinforced plastic cabinet
- 2-way coaxial speaker system (200 mm bass speaker and 13 mm tweeter)
- Integrated audio transformer with 4 power taps (30/20/10/5 W_{RMS})
- Connection cable with luster terminals



GLS-251/BN

Order No. 16.3060



Weatherproof PA garden speaker "Rock", stone look, for general PA applications, e.g. in gardens, hotels, restaurants and pubs.

- 100 V line technique or 8 Ω operation
- Robust, glass fibre reinforced plastic cabinet
- 2-way coaxial speaker system (165 mm bass speaker and 13 mm tweeter)
- Integrated audio transformer with 4 power taps (20/15/10/5 W_{RMS})
- Connection cable with luster terminals



Model	GLS-351/GR	GLS-301/GR	GLS-251/BN
Frequency range	60-20,000 Hz	60-20,000 Hz	70-20,000 Hz
Number of speakers	2	2	2 (coaxial)
Power rating	30/20/10/5 W _{RMS} (100 V) 90 W _{MAX} /45 W _{RMS} (8 Ω)	30/20/10/5 W _{RMS} (100 V) 90 W _{MAX} /45 W _{RMS} (8 Ω)	20/15/10/5 W _{RMS} (100 V) 60 W _{MAX} /30 W _{RMS} (8 Ω)
SPL (1 W/1 m)	88 dB	85 dB	85 dB
Admiss. ambient temp.	-20 °C to +50 °C	-20 °C to +50 °C	-20 °C to +50 °C
Dimensions	approx. 370x300x300 mm	approx. 310x320x500 mm	approx. 340x370x290 mm
Weight	6.8 kg	9.5 kg	5 kg

Garden Speakers

GLS-400/GN

Order No. 16.3150



Weatherproof hi-fi and PA garden speaker, for high-quality PA applications, e.g. in gardens and swimming pool areas.

- 100 V line technique or 8 Ω operation
- Hi-fi quality sound
- High-tech coaxial speaker system of a high power capability with a 20 cm (8") bass speaker and 25 mm (1") tweeter with inverse titanium dome
- Extensive crossover network for a high-quality sound
- Robust plastic housing of excellent quality
- Housing also suitable for in-ground installation
- Protection class: IP56
- Integrated audio transformer with 4 power taps (64/32/16/8 W_{RMS})
- Removable stainless steel front grille
- Connection cable, 7 cores



GLS-201/GR

Order No. 16.1820



Weatherproof PA garden speaker "Granite", stone look, for general PA applications, e.g. in gardens, hotels, restaurants and pubs.

- 100 V line technique
- 20 cm (8") high-quality full range speaker with dual cone
- Polypropylene cone
- Integrated audio transmitter with 3 power taps (25/15/7.5 W_{RMS})
- 5.8 m multicore connection cable



GLS-200/GR

Order No. 16.1510



Weatherproof PA garden speaker "Granite", 100 W_{MAX}, 8 Ω , stone look, for general PA applications, e.g. in gardens, hotels, restaurants and pubs.

- 20 cm (8") high-quality full range speaker with dual cone
- Polypropylene cone



Model	GLS-400/GN	GLS-201/GR	GLS-200/GR
Frequency range	45-20,000 Hz	80-15,000 Hz	50-16,000 Hz
Number of speakers	2	1	1
Power rating	64/32/16/8 W _{RMS} (100 V) 150 W _{MAX} /75 W _{RMS} (8 Ω)	25/15/7.5 W _{RMS}	100 W _{MAX}
SPL (1 W/1 m)	91 dB	88 dB	89 dB
Admiss. ambient temp.	-20 °C to +45 °C	-10 °C to +40 °C	-10 °C to +40 °C
Dimensions	ø 341 mm x 433 mm	440x310x320 mm (dimensions may slightly vary for manufacturing reasons)	440x310x320 mm (dimensions may slightly vary for manufacturing reasons)
Weight	7.5 kg	5.7 kg	4.9 kg

Music Horns

The music horns from MONACOR are the state-of-the-art solution in order to use the full range of a horn speaker with a clearly extended frequency range. The 2-way technology with a dynamic cone bass-midrange speaker and a horn tweeter allows for an increase in the sound quality and permits to radiate the keynotes of voices and instruments which cannot be achieved by conventional horn speakers. The music horns are a perfect solution whenever an optimum voice volume and/or a more complete music transmission is required.

IT-400TW

Order No. 16.2580



Weatherproof horn speaker (music horn), 2-way technology

- 100 V line technique with very high tapping power
- Weatherproof and IP66 certified
- Very wideband sound with a distinct bass volume even at very high volume levels
- 16 cm bass-midrange speaker and 25 mm (1") horn
- Suitable for general indoor and outdoor applications wherever a high sound pressure level and an excellent sound are required
- Robust plastic housing with extra low resonance and very high rear dampening
- Supplied with mounting bracket and screws made of stainless steel
- Connection via screw terminals with 4 power taps



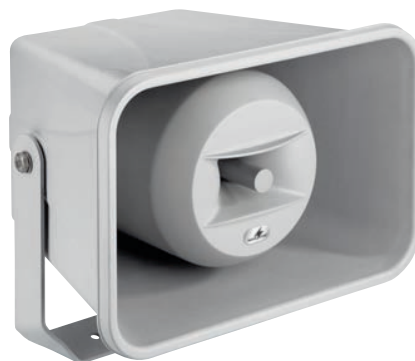
IT-300TW

Order No. 16.2230



Weatherproof horn speaker (music horn), 2-way technology

- 100 V line technique with high power taps
- Weatherproof and IP66 certified
- Very wideband sound with a distinct bass volume
- 16 cm bass-midrange speaker and 25 mm (1") horn
- Suitable for general indoor and outdoor applications wherever a high sound pressure level and an excellent sound are required
- Robust light grey ABS plastic housing
- Supplied with mounting bracket and stainless steel screws
- Connection via screw terminal strip with 4 power taps



IT-100TW

Order No. 16.2570



Weatherproof horn speaker (music horn), 2-way technology

- 100 V line technique
- Weatherproof and IP66 certified
- Wideband sound with clear bass frequencies
- 13 cm bass-midrange speaker and 25 mm (1") horn
- Suitable for indoor and outdoor applications
- Robust plastic housing of very low resonance
- Supplied with mounting bracket and screws made of stainless steel
- Connection via screw terminals with 4 power taps



Model	IT-400TW	IT-300TW	IT-100TW
Power rating	60/30/15/7.5 W _{RMS}	30/15/7.5/3.75 W _{RMS}	30/15/7.5/3.75 W _{RMS}
Frequency range	100-15,000 Hz	100-15,000 Hz	110-16,000 Hz
SPL (1 W/1 m)	101 dB	101 dB	99 dB
Radiation angle (hor./vert.)	100°/60°	100°/60°	110°/60°
Admiss. ambient temp.	-20 °C to +50 °C	-20 °C to +50 °C	-20 °C to +50 °C
Dimensions	420x335x400 mm	370x250x300 mm	310x215x330 mm
Weight	7.1 kg	4.7 kg	4.7 kg
Special feature	IP66, ABS, 2-way	IP66, ABS, 2-way	IP66, ABS, 2-way

100 V Horn Speakers

IT-250TW

Order No. 16.3190

100V 8Ω IP66 new

Weatherproof horn speaker (music horn), 2-way technology

- 100 V line technique or 8 Ω operation
- IP66 certified
- High-performance music horn at an attractive price
- 16 cm bass-midrange speaker and 25 mm (1") horn
- Suitable for general indoor and outdoor applications wherever a high sound pressure level and an excellent sound are required
- ABS plastic housing
- Supplied with mounting bracket and stainless steel screws
- 6 power taps, connection via screw terminal strip



Model	IT-250TW
Power rating	50/25/12.5/9/4.5/3.5 W _{RMS} (100 V)
	50 W _{RMS} (8 Ω)
Frequency range	150-15,000 Hz
SPL (1W/1m)	97 dB
Radiation angle (hor./vert.)	100°/60°
Admiss. ambient temp.	-20 °C to +50 °C
Dimensions	370x270x305 mm
Weight	4.1 kg
Special feature	IP66, ABS, 2-way
Replacement voice coil	-

IT-100

Order No. 16.3000

100V IP66

Weatherproof horn speaker, with very high power capability.

- 100 V line technique
- Weatherproof and IP66 tested
- Protected against powerful water jets
- Suitable for general indoor and outdoor applications
- Light grey ABS housing (self-extinguishing, corresponds to the standard UL 94V-0)
- Mounting bracket and screws made of stainless steel
- Integrated ceramic connection terminal with thermal fuse
- 4 power taps



UL 94V-0

IT-60

Order No. 16.2990

100V IP66

Weatherproof horn speaker, with high power capability.

- 100 V line technique
- Weatherproof and IP66 tested
- Protected against powerful water jets
- Suitable for general indoor and outdoor applications
- Light grey ABS housing (self-extinguishing, corresponds to the standard UL 94V-0)
- Mounting bracket and screws made of stainless steel
- Integrated ceramic connection terminal with thermal fuse
- 4 power taps



UL 94V-0

Model	IT-100	IT-60
Power rating	100/50/25/12.5 W _{RMS}	60/30/15/7.5 W _{RMS}
Frequency range	200-7,500 Hz	230-9,000 Hz
SPL (1 W/1 m)	112 dB	110 dB
Radiation angle (hor./vert.)	80°/30°	80°/30°
Admiss. ambient temp.	-20 °C to +50 °C	-20 °C to +50 °C
Dimensions	ø 305 mm x 385 mm	ø 305 mm x 385 mm
Weight	4.1 kg	3.9 kg
Special feature	IP66, ABS	IP66, ABS

100 V Horn Speakers

IT-50

Order No. 16.0150



Horn speaker

- Humidity-proof
- 100 V line technique
- For industrial use, in workshops



IT-40

Order No. 16.1360



Weatherproof horn speaker

- 100 V line technique
- Weatherproof and IP66 tested
- Protected against powerful water jets
- Suitable for general indoor and outdoor applications
- Robust plastic housing
- Mounting bracket and screws made of stainless steel
- 5-step power selector switch



IT-35

Order No. 16.0870



Weatherproof horn speaker

- 100 V line technique
- Weatherproof and IP66 tested
- Protected against powerful water jets
- Suitable for general indoor and outdoor applications
- Robust plastic housing
- Mounting bracket and screws made of stainless steel
- 5-step power selector switch



The corresponding radiation angles can be found on our website www.monacor.com

Model	IT-50	IT-40	IT-35
Power rating	50/25/15/5 W _{RMS}	40/30/20/10/5 W _{RMS}	25/20/15/10/5 W _{RMS}
Frequency range	200-9,000 Hz	180-7,000 Hz	250-10,000 Hz
SPL (1 W/1 m)	107.5 dB	113 dB	108 dB
Radiation angle (hor./vert.)	90°/90°	100°/45°	110°/52°
Admiss. ambient temp.	-	-20 °C to +50 °C	-20 °C to +50 °C
Dimensions	ø 390 mm x 440 mm	400x200x420 mm	300x180x315 mm
Weight	5.5 kg	3.9 kg	2.5 kg
Special feature	aluminium	IP66, plastic	IP66, plastic
Replacement voice coil	IT-50/VC	IT-40/VC	IT-230/VC

100 V Horn Speakers

IT-33

Order No. 16.2190



Weatherproof horn speaker

- 100 V line technique
- IP64 tested, splashproof
- White ABS housing (self-extinguishing, corresponds to the standard UL 94V-0)
- Particularly high power capability in relation to the size of the speaker
- Suitable for general indoor and outdoor applications
- Integrated high-pass filter for optimising the sound and stability



UL 94V-0

IT-30

Order No. 16.0670



Weatherproof horn speaker

- 100 V line technique
- Weatherproof and IP66 tested
- Protected against powerful water jets
- Suitable for general indoor and outdoor applications
- Aluminium housing
- Mounting bracket and screws made of stainless steel
- 4-step power selector switch

The corresponding radiation angles can be found on our website www.monacor.com



IT-20

Order No. 16.0660



Weatherproof horn speaker

- 100 V line technique
- Weatherproof and IP66 tested
- Protected against powerful water jets
- Suitable for general indoor and outdoor applications
- Robust plastic housing
- Mounting bracket and screws made of stainless steel
- 4-step power selector switch



Model	IT-33	IT-30	IT-20
Power rating	25/12.5/6.25 W _{RMS}	20/15/10/5 W _{RMS}	15/10/5/2.5 W _{RMS}
Frequency range	500-13,000 Hz	250-10,000 Hz	275-7,000 Hz
SPL (1 W/1 m)	107 dB	108.5 dB	106 dB
Radiation angle (hor./vert.)	90°/90°	80°/80°	100°/50°
Admiss. ambient temp.	-20 °C to +50 °C	-20 °C to +50 °C	-20 °C to +50 °C
Dimensions	ø 130 mm x 175 mm	ø 265 mm x 310 mm	250x145x300 mm
Weight	1.8 kg	2.3 kg	2.0 kg
Special feature	IP64, self-extinguishing ABS	IP66, aluminium	IP66, plastic
Replacement voice coil	-	IT-230/VC	IT-230/VC

100 V Horn Speakers

IT-130

Order No. 16.1710



Weatherproof horn speaker

- 100 V line technique
- Weatherproof and IP66 tested
- Protected against powerful water jets
- Power selector switch
- For open-air events, industrial use, in workshops



IT-115

Order No. 16.1700



Weatherproof horn speaker

- 100 V line technique
- Weatherproof and IP66 tested
- Protected against powerful water jets
- Power selector switch
- For open-air events, industrial use, in workshops



IT-110

Order No. 16.1690



Horn speaker

- 100 V line technique
- Weatherproof and IP66 tested
- Protected against powerful water jets
- Power selector switch
- For open-air events, industrial use, in workshops



Model	IT-130	IT-115	IT-110
Power rating	30/15/10/5/3/1 W _{RMS}	15/10/5/3/1 W _{RMS}	10/5/3/1 W _{RMS}
Frequency range	250-16,000 Hz	280-12,500 Hz	315-12,500 Hz
SPL (1 W/1 m)	109dB	108 dB	105 dB
Radiation angle (hor./vert.)	no data	no data	no data
Admiss. ambient temp.	-20 °C to +50 °C	-20 °C to +50 °C	-20 °C to +50 °C
Dimensions	290x215x260 mm	225x160x235 mm	175x130x185 mm
Weight	1.7 kg	1.3 kg	1.1 kg
Special feature	IP66, ABS plastic	IP66, ABS plastic	IP66, ABS plastic

Low-impedance Horn Speakers

NR-100KS

Order No. 16.3020



Weatherproof horn speaker, with very high power capability.

- 16 Ω speaker system
- IP66 tested, protected against powerful water jets
- Suitable for general indoor and outdoor applications
- Robust light grey plastic housing of compact size
- Aluminium mounting bracket



NR-60KS

Order No. 16.3010



Weatherproof horn speaker, with high power capability.

- 16 Ω speaker system
- IP66 tested, protected against powerful water jets
- Suitable for general indoor and outdoor applications
- Robust light grey plastic housing
- Aluminium mounting bracket



NR-10M

Order No. 16.0480



Flush-mount horn speaker (music horn) with full range speaker, 4 Ω

- For wall mounting and ceiling installation
- After installation weatherproof and IP54 certified
- 4 Ω speaker system
- 5 cm (2.5") full range speaker with horn front attachment
- Suitable for general indoor and outdoor applications wherever a high sound pressure level and an excellent sound are required
- ABS plastic housing
- Mounting flange with foam rubber sealing
- Connection via terminal strip



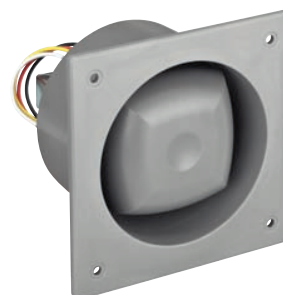
IT-10M

Order No. 16.0470



Flush-mount horn speaker (music horn) with full range speaker

- For wall mounting and ceiling installation
- 100 V line technique with 3 power taps
- After installation weatherproof and IP54 certified
- 5 cm (2.5") full range speaker with horn front attachment
- Suitable for general indoor and outdoor applications wherever a high sound pressure level and an excellent sound are required
- ABS plastic housing
- Mounting flange with foam rubber sealing
- Connection via terminal strip



Model	NR-100KS	NR-60KS	NR-10M	IT-10M
Power rating	100 W _{MAX} /16 Ω	60 W _{MAX} /16 Ω	20 W _{MAX} /4 Ω	10/5/2.5 W _{RMS}
Frequency range	300-9,000 Hz	340-10,000 Hz	200-15,000 Hz	200-15,000 Hz
SPL (1 W/1 m)	106 dB	103 dB	98 dB	98 dB
Radiation angle (hor./vert.)	-	-	100°/100°	100°/100°
Admiss. ambient temp.	-20 °C to +50 °C	-20 °C to +50 °C	0-40 °C	0-40 °C
Dimensions	ø 146 mm x 160 mm	ø 146 mm x 160 mm	120x120x120 mm	120x120x120 mm
Weight	2.2 kg	2.2 kg	0.45 kg	0.75 kg
Special feature	IP66, plastic	IP66, plastic	IP55, ABS	IP55, ABS

Low-impedance Horn Speakers

NR-40KS

Order No. 16.1370



Weatherproof horn speaker

- 16 Ω speaker system
- IP66 tested, protected against powerful water jets
- Suitable for general indoor and outdoor applications
- Robust plastic housing
- Mounting bracket and screws made of stainless steel

The corresponding radiation angles can be found on our website www.monacor.com



UHC-30

Order No. 16.0640



Weatherproof horn speaker

- 8 Ω speaker system
- IP66 tested, protected against powerful water jets
- For open-air events, industrial use, in workshops
- Mounting bracket and screws made of stainless steel



NR-254KS

Order No. 16.2480



Weatherproof horn speaker

- 4 Ω speaker system
- IP66 tested, protected against powerful water jets
- Especially suitable for voice transmissions
- Robust plastic housing of compact size
- Supplied with mounting bracket and mounting screws

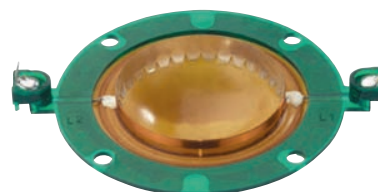


Model	NR-40KS	UHC-30	NR-254KS
Power rating	60 W _{MAX} /16 Ω	38 W _{MAX} /8 Ω	25 W _{MAX} /4 Ω
Frequency range	180-7,000 Hz	230-10,000 Hz	600-14,000 Hz
SPL (1 W/1 m)	113 dB	108.5 dB	107 dB
Radiation angle (hor./vert.)	110°/45°	75°/75°	90°/90°
Admiss. ambient temp.	-20 °C to +50 °C	-20 °C to +50 °C	-20 °C to +50 °C
Dimensions	400x200x385 mm	ø 310 mm x 285 mm	106x106x88 mm
Weight	3.3 kg	2.0 kg	1.1 kg
Special feature	IP66, plastic	IP66, aluminium	IP66, plastic
Replacement voice coil	IT-40/VC	IT-230/VC	-

Replacement Voice Coils

For horn systems.

Model	Order No.	Suitable for:
IT-50/VC	16.0370	IT-50
IT-230/VC	16.0750	IT-20, IT-30, IT-35, UHC-30, NR-33KS
IT-40/VC	16.1380	IT-40, NR-40KS
KU-516/VC	16.0730	KU-516
KU-616T/VC	16.0720	KU-616T
KU-916T/VC	16.1620	KU-916T



Low-impedance Horn Speakers



NR-35KS
Order No. 16.0250



- Horn speaker**
- Humidity-proof
 - 8 Ω speaker system



NR-33KS
Order No. 16.0650



- Weatherproof horn speaker**
- IP66 tested, protected against powerful water jets
 - 8 Ω speaker system
 - Suitable for general indoor and outdoor applications
 - Robust plastic housing
 - Mounting bracket and screws made of stainless steel



NR-25KS
Order No. 16.0240



- Horn speaker**
- Humidity-proof
 - 8 Ω speaker system



NR-24KS
Order No. 16.1020



- Horn speaker**
- Humidity-proof
 - 8 Ω speaker system



NR-22KS
Order No. 16.1010



- Horn speaker**
- Humidity-proof
 - 8 Ω speaker system



NR-20KS
Order No. 16.1000



- Horn speaker**
- Humidity-proof
 - 8 Ω speaker system

Model	NR-35KS	NR-33KS	NR-25KS	NR-24KS	NR-22KS	NR-20KS
Power rating	40 W _{MAX} /8 Ω	23 W _{MAX} /8 Ω	30 W _{MAX} /8 Ω	30 W _{MAX} /8 Ω	15 W _{MAX} /8 Ω	10 W _{MAX} /8 Ω
Frequency range	300-12,000 Hz	275-7,000 Hz	350-8,000 Hz	400-7,000 Hz	600-7,000 Hz	800-7,000 Hz
SPL (1 W/1 m)	107 dB	106 dB	102 dB	105 dB	104 dB	103 dB
Radiation angle (hor./vert.)	100°/50°	100°/50°	-	-	-	-
Admiss. ambient temp.	-	-20 °C to +50 °C	-	-	-	-
Dimensions	280x170x215 mm	250x145x272 mm	200x140x235 mm	200x150x235 mm	ø 135 mm x 165 mm	ø 90 mm x 105 mm
Weight	2.0 kg	1.5 kg	1.4 kg	1.1 kg	0.5 kg	0.4 kg
Special feature	plastic	IP66, plastic	plastic	plastic	plastic	plastic
Replacement voice coil	-	IT-230/VC	-	-	-	-