

## Loop Amplifiers



### LA-400

Order No. 17.3790



**Active loop amplifier**, in constant current technology with dynamic compressor for setting up an inductive sound reproduction system in rooms up to 400 m<sup>2</sup>. The inductive transmission of audio signals allows users of hearing aids with a T-coil or inductive receivers, e.g. the LR-200, to receive audio signals. The wireless transmission is an advantage of inductive sound reproduction systems which makes it possible for the user to move freely within the loop.

Inductive sound reproduction systems are used for various applications, e.g. as a hearing aid for the hearing impaired in churches, theatres, cinemas, waiting rooms and lounges, as interpreting systems, for lectures in museums, exhibitions, etc. With inductive sound reproduction systems, an inductive loop made of a wire winding is

laid on the floor, the wall or along the ceiling and is controlled by a constant current amplifier. Thus, a magnetic field is created within the loop which induces a voltage into the T-coil of the hearing aid or into the inductive receiver. In the receivers, this voltage is then converted again into an audio signal.

- Dynamic compressor
- Automatic talkover
- Metal loss correction 0-(+3) dB/oct.
- Phantom power can be switched on additionally
- 482 mm (19") rack installation with supplied mounting brackets

Model	LA-400
Loop current	10 A <sub>PEAK</sub>
Loop resistance	0.2-2 Ω
Room size	up to 400 m <sup>2</sup>
Inputs	
Mic/line	mic 1.6 mV/2.6 kΩ, combo, bal. switchable to line 630 mV/6.5 kΩ, combo, bal. line 630 mV/9 kΩ, RCA, unbal. alarm: 2 screw terminals for connecting a switch loop: 2 screw terminals
Outputs	
Equalizer	
Bass	±8 dB, 100 Hz
Treble	±10 dB, 6 kHz
Frequency range	50-7,500 Hz, ±3 dB
THD	1 %
Admiss. ambient temp.	0-40 °C
Power supply	230 V~/50 Hz/250 VA
Dimensions	482x88x280 mm, 2 RS
Weight	9 kg



### LA-200

Order No. 17.2110



**Active loop amplifier**, in constant current technology with dynamic compressor for setting up an inductive sound reproduction system in rooms up to 200 m<sup>2</sup>. The inductive transmission of audio signals allows users of hearing aids with a T-coil or inductive receivers, e.g. the LR-200, to receive audio signals. The wireless transmission is an advantage of inductive sound reproduction systems which makes it possible for the user to move freely within the loop.

Inductive sound reproduction systems are used for various applications, e.g. as a hearing aid for the hearing impaired in churches, theatres, cinemas, waiting rooms and lounges, as interpreting systems, for lectures in museums, exhibitions, etc. With inductive sound reproduction systems, an inductive loop made of a wire winding is

laid on the floor, the wall or along the ceiling and is controlled by a constant current amplifier. Thus, a magnetic field is created within the loop which induces a voltage into the T-coil of the hearing aid or into the inductive receiver. In the receivers, this voltage is then converted again into an audio signal.

- Dynamic compressor
- Automatic talkover
- Metal loss correction 0-(+3) dB/oct.
- Phantom power can be switched on additionally
- 482 mm (19") rack installation with supplied mounting brackets

Model	LA-200
Loop current	7 A <sub>PEAK</sub>
Loop resistance	0.2-2 Ω
Room size	up to 200 m <sup>2</sup>
Inputs	
Mic/line	mic 1.6 mV/2.6 kΩ, combo, bal. switchable to line 630 mV/6.5 kΩ, combo, bal. line 630 mV/9 kΩ, RCA, unbal. alarm: 2 screw terminals for connecting a switch loop: 2 screw terminals
Outputs	
Equalizer	
Bass	±8 dB, 100 Hz
Treble	±10 dB, 10 kHz
Frequency range	50-7,500 Hz, ±3 dB
THD	1 %
Admiss. ambient temp.	0-40 °C
Power supply	230 V~/50 Hz/150 VA
Dimensions	482x88x280 mm, 2 RS
Weight	8 kg

# Loop Amplifier, Inductive Receiver

## LA-40

Order No. 17.2330

**Active loop amplifier**, with dynamic compressor, specifically for setting up an inductive sound reproduction system in domestic locations. The loop amplifier LA-40 transmits the audio signals from a TV, audio system and/or microphone to the induction loop which is laid on the floor, the wall or along the ceiling. Thus, a magnetic field is created within the loop which is received by the T-coil of the hearing aid or the inductive receiver and is then converted again into an audio signal.

The wireless transmission is an advantage of inductive sound reproduction systems. It makes it possible for the user to move freely within the loop and to adjust the volume of the hearing aid or receiving unit (LR-200) as desired, without disturbing the other occupants.

The LA-40 can be connected directly to the SCART jack of a TV (via supplied SCART adapter) or to an audio system. Talks of the other occupants can be heard via the connection of a microphone which is available at option.

The integrated signal generator of the LA-40 allows to create an alarm signal via an optional switch.

- Supplied with 35 m loop wire for setting up an induction loop, SCART adapter, PSU
- Integrated alarm signal can be switched on additionally
- Dynamic compressor
- Adjustable input sensitivity for line and microphone
- 2-way tone control
- Adjustable loop current
- LEDs for power, signal/PEAK and loop current
- Headphone connection at the front panel
- Built-in phantom power for electret microphones
- Recommended microphone: ECM-300LA



Model	LA-40
Loop current	2.8 A <sub>PEAK</sub>
Loop resistance	0.4-2 Ω
Room size	up to 40 m²
Inputs	
Mic/line	mic: 2 mV/660 Ω (phantom voltage: 7.2 V) 6.3 mm jack line: 48 mV/11 kΩ, 2 x RCA alarm: 2 terminals for connecting a switch
Outputs	loop: connection of the supplied loop via 2 terminals headphones: ≥ 32 Ω, 3.5 mm jack
Equalizer	
Bass	±8 dB, 100 Hz
Treble	±10 dB, 10 kHz
Frequency range	75-7,500 Hz, ±3 dB
THD	0.44 %
Admiss. ambient temp.	0-40 °C
Power supply	via supplied PSU
Dimensions	175x102x45 mm
Weight	510 g

## LR-200

Order No. 17.2120

**Inductive receiver**, for receiving audio signals in inductive sound reproduction systems. The electromagnetic field which is created by an induction loop is received by the inductive receiver and converted into an audio signal. Any number of receivers can be operated within one induction loop. The unit is suitable for people with and without hearing problems and can be used for various applications: Hearing aid for the hearing impaired Operational test of inductive sound reproduction systems

Detection of stray radiation within a loop Interpreting systems Lectures in museums, at exhibitions, etc.

- 3.5 mm mono connection for headphones ≥ 32 Ω
- Volume control
- Low cut switch
- Belt clip
- Power supply via 9 V battery
- Dimensions: 63x100x29 mm
- Weight: 100 g



## NL-90

Order No. 17.3090

**Induction loop**, for wireless transmission of audio signals to hearing aids via optional pocket transmitter.

- Comfortable to wear around the neck (loop diameter approx. 26 cm)

- Matching the pocket transmitters ATS-10R, ATS-16R, ATS-40R, TXA-800R
- 3.5 mm stereo jack connection



## Audio Transmission Systems and Accessories

### 40-channel Mono PLL Voice Transmission System, 863-865 MHz

- Economy tour guide system
- Due to the narrow-band frequency range which has been perfectly adapted to voice transmissions, a parallel operation of up to 12 different channels is possible without any interference
- Licence-free in the EU

#### ATS-50R

Order No. 25.5160

**new**

#### 40-channel PLL receiver

- Supplied with matching earphone
- Adjustable headphone output
- Switches off automatically after not receiving an input signal for 20 minutes (power-saving function)
- LCD for channel, carrier signal and battery status
- Autolock function
- Belt clip
- Power supply via 1 x 1.2 V NiMH rech. battery AA size (not supplied)
- Dimensions: 42x98x24 mm
- Weight: 45 g



#### ATS-50T

Order No. 25.5170

**new**

#### 40-channel PLL transmitter, for microphone operation and audio line signals.

- Integrated microphone
- Supplied with additional electret tie clip microphone
- Audio line input via 3.5 mm stereo jack
- LCD for channel and battery status
- Mute button
- Belt clip
- Transmitting power:  $\leq 10$  mW (EIRP), operating range: approx. 100 m
- Power supply via 1 x 1.2 V NiMH rech. battery AA size (not supplied)
- Dimensions: 42x98x24 mm
- Weight: 45 g

**Licence-free in the EU!**



#### ATS-25C

Order No. 25.5180

**new**

#### Transport case with integrated charging function, for the transmitters and receivers of the ATS-50 series.

- For simultaneously charging the rech. batteries of up to 25 units
- Each slot with LED for indicating battery charging status
- Transport case with black artificial leather cover
- Supplied with matching PSU
- Dimensions: 336x84x245 mm
- Weight: 7.5 kg

**Supplied without units.**



## Audio Transmission Systems and Accessories

### 16-channel Digital Voice Transmission System, 863-865 MHz

- Suitable as a tour guide system and for any other application in which a certain voice source is to be distributed to one or more receivers
- High resistance to interference due to digital transmission
- High operating range



#### ATS-20R

Order No. 25.5640

**new**

##### 16-channel miniature receiver

- Supplied with matching clip-on earphone
- Switches off automatically after not receiving an input signal for 20 minutes (power-saving function)
- LCD for channel, carrier signal, volume and battery status
- Autolock function
- Supplied with lanyard
- Power supply via integrated rech. lithium battery (3.7 V/600 mAh)
- Micro USB charging connection for ATS-12CB, ATS-35CB or USB charger, available at option
- Dimensions: 40x87x12 mm
- Weight: 37 g



#### ATS-12CB

Order No. 25.5660

**new**

##### Transport bag with integrated charging function, for the transmitters and receivers of the ATS-20 series.

- For simultaneously charging the rech. batteries of up to 12 units
  - Each slot with LED for indicating battery charging status
  - Black nylon bag with zip fastener, carrying handle and compartments for accessories
  - Supplied with matching PSU
  - Dimensions: 350x110x120 mm
  - Weight: 1.1 kg
- Supplied without units.**

- Due to the narrow-band frequency range which has been perfectly adapted to voice transmissions, a parallel operation of up to 4 different channels is possible without any interference
- Extra small and lightweight transmitters and receivers
- Licence-free in the EU



#### ATS-20T

Order No. 25.5650

**new**

##### 16-channel miniature transmitter, for microphone operation and audio line signals.

- Supplied with electret tie clip microphone
- Microphone input/audio line input via 3.5 mm jack with automatic detection, depending on the configuration (mono/stereo)
- LCD for channel and battery status
- Mute button
- Supplied with lanyard
- Transmitting power:  $\leq 10$  mW (EIRP), operating range: approx. 100 m
- Power supply via integrated rech. lithium battery (3.7 V/600 mAh)
- Micro USB charging connection for ATS-12CB, ATS-35CB or USB charger, available at option
- Dimensions: 40x80x12 mm
- Weight: 37 g

**Licence-free in the EU!**



#### ATS-35CB

Order No. 25.5670

**new**

##### Transport bag with integrated charging function, for the transmitters and receivers of the ATS-50 series.

- For simultaneously charging the rech. batteries of up to 25 units
  - Each slot with LED for indicating battery charging status
  - Transport case with black artificial leather cover
  - Supplied with matching PSU
  - Dimensions: 420x140x250 mm
  - Weight: 3 kg
- Supplied without units.**

## Audio Transmission Systems and Accessories

### Professional 16-channel Mono PLL Audio Transmission System, 863-865 MHz, with Extensive Accessories

- Compatible with the portable amplifier systems of the TXA-1000 and TXA-800 series
- Suitable as a tour guide system and for any other application in which a certain audio source or voice source is to be distributed to one or more receivers
- Wireless transmissions of audio signals with one transmitter and one receiver are also possible
- Simultaneous operation of up to 8 transmitters with different frequencies (dep. on distance of transmitter, stationary RF sources of interference and other local conditions)
- Licence-free in the EU



#### ATS-162T

Order No. 25.4590

**16-channel PLL transmitter**, for microphone operation and line audio signals.

- Matching the receivers ATS-162R, TXA-800R and the portable amplifiers of the TXA-1000 and TXA-800 series
- Integrated microphone
- Microphone input via 3.5 mm mono jack
- Audio line input via 3.5 mm stereo jack
- Backlit LCD for channel/frequency and battery status
- Belt clip, lanyard
- Power supply via integrated rechargeable lithium battery (1,200 mAh) or low-voltage jack (5 V)
- Transmitting power:  $\leq 5$  mW (EIRP), operating range: approx. 50 m
- Dimensions: 52x88x35 mm
- Weight: 88 g

**Licence-free in the EU.**



#### ATS-162CORD

Order No. 22.1230

**Lanyard**, for the transmitters and receivers of the ATS-162 series. Nylon version.



#### ATS-162R

Order No. 25.4580

**16-channel PLL receiver**

- Matching the transmitters ATS-162T, TXA-800ST and the portable amplifier system TXA-1002CD and TXA-802CD with integrated wireless transmitter
- Built-in speaker
- Including matching clip-on earphone with rubber ear hook
- Audio output via 3.5 mm stereo jack
- Pilot tone squelch and noise squelch
- Backlit LCD for channel/frequency and battery status
- Volume control
- Belt clip, lanyard
- Power supply via integrated rechargeable lithium battery (1,200 mAh) or low-voltage jack (5 V)
- Dimensions: 52x98x35 mm
- Weight: 88 g



#### ATS-162PS

Order No. 25.4600

**Intelligent PWM quick-charge station**, for simultaneously charging the rechargeable batteries of two units from the ATS-162 series.

- Average charging time, depending on capacity and condition of the rechargeable batteries used: approx. 4.5-5.5 hours
- Each slot with LED for indicating battery charging status
- Mechanical reverse polarity protection
- Supplied with plug-in PSU
- Dimensions: 85x70x106 mm



#### ATS-162C

Order No. 25.4610

**Transport case with intelligent PWM**

**quick-charge function**, for the transmitters and receivers of the ATS-162... series.

- For simultaneously charging the rech. batteries of up to 30 units
- Average charging time, depending on capacity and condition of the rechargeable batteries used: approx. 4.5-5.5 hours
- Each slot with LED for indicating battery charging status
- Mechanical reverse polarity protection
- Transmitter/receiver synchronisation at the push of a button, i.e. all plugged-in units can be adjusted together to one preset transmission channel
- Lockable plastic transport case fitted with castors
- Supplied with matching switch-mode PSU
- Dimensions: 681x332x238 mm



## Audio Transmission Systems and Accessories

### Professional 16-channel Mono PLL Audio Transmission System, 863-865 MHz, with Extensive Accessories

- Suitable as a tour guide system and for any other application in which a certain audio source or voice source is to be distributed to one or more receivers
- Wireless transmissions of audio signals with one transmitter and one receiver are also possible
- Simultaneous operation of up to 8 transmitters with different frequencies (dep. on distance of transmitter, stationary RF sources of interference and other local conditions)
- Licence-free in the EU



#### ATS-16R

Order No. 24.4680

##### 16-channel PLL receiver

- Built-in speaker
- Including matching clip-on earphone with rubber ear hook
- Connection for optional audio tube earphone ET-16
- Audio output via 3.5 mm stereo jack
- Pilot tone squelch and noise squelch
- Status indication of rech. battery, indication of carrier signal
- Volume level control, belt clip
- Power supply via 2 x 1.2 V NiMH rech. battery AA size (not supplied) or low-voltage jack (5 V), dimensions: 66x111x35 mm, weight: 100 g



#### ATS-16T

Order No. 24.4690

##### 16-channel PLL transmitter, for microphone operation and line audio signals.

- Integrated microphone
- Supplied with additional electret tie clip microphone
- Audio line input via 3.5 mm mono jack
- Status indication of rech. battery, indication of carrier signal
- Volume level control, belt clip
- Power supply via 2 x 1.2 V NiMH rech. battery AA size (not supplied) or low-voltage jack (5 V), transmitting power: ≤ 10 mW (EIRP), operating range: approx. 50 m, dimensions: 66x111x35 mm, weight: 85 g

**Licence-free in the EU!**



#### ATS-16BAG

Order No. 22.0720

**Artificial leather protective bag**, for the transmitters and receivers of the ATS-16 series. With belt clip and hook and loop fastener.



#### ATS-16CORD

Order No. 22.0730

**Lanyard**, for the transmitters and receivers of the ATS-16 series. Nylon version.



#### ATS-16PS

Order No. 24.4670

**Intelligent PWM quick-charge station**, for simultaneously charging the rechargeable batteries (NC, NiMH) of two units from the ATS-16 series.

- Average charging time, depending on capacity and condition of the rechargeable batteries used: approx. 3-4 hours, e.g. for 1,300 mAh rech. batteries
- Each slot with LED for indicating a fault and battery charging status
- Mechanical reverse polarity protection
- Supplied with plug-in PSU



#### ATS-36C

Order No. 24.4700

**Transport case with intelligent PWM quick-charge function**, for the transmitters and receivers of the ATS-16... series.

- For simultaneously charging the rech. batteries (NC, NiMH) of up to 36 units
- Average charging time, depending on capacity and condition of the rechargeable batteries used: approx. 5-6 hours, e.g. for 1,300 mAh rech. batteries
- Each slot with LED for indicating a fault and battery charging status
- Mechanical reverse polarity protection

The hand-held microphone with integrated transmitter ATS-12HT matches the ATS-16 series and is available at option.

- Lockable plastic transport case fitted with castors
- Supplied with matching switch-mode PSU
- Dimensions: 860x230x350 mm

## Audio Transmission Systems and Accessories

### 16-channel Mono PLL Audio Transmission System, 863-865 MHz

- Suitable as a tour guide system and for any other application in which a certain audio source or voice source is to be distributed to one or more receivers
- Wireless transmissions of audio signals with one transmitter and one receiver are also possible
- Due to the small frequency spacing in this free frequency range, a simultaneous operation of not more than two transmitters is recommended
- Licence-free in the EU

#### ATS-10R

Order No. 24.3500

**Receiver**, with 3.5 mm mono jack.

- 16 selectable channels
- Built-in speaker
- Including matching clip-on earphone with rubber ear hook
- Status indication of rech. battery
- Operating positions: on/standby/off
- Volume level control, belt clip
- Power supply via 2 x 1.2 V NiMH rech. battery AA size (not supplied), dimensions: 92x65x25 mm, weight: 80 g



#### ATS-10TM

Order No. 24.3510

**Transmitter**, for microphone applications.

- 16 selectable channels
- Integrated microphone
- Supplied with additional electret tie clip microphone
- Status indication of rech. battery
- Operating positions: on/standby/off
- Volume level control, belt clip
- Power supply via 2 x 1.2 V NiMH rech. battery AA size (not supplied), transmitting power:  $\leq 10$  mW (EIRP), operating range: approx. 50 m, dimensions: 92x65x25 mm, weight: 78 g

Licence-free in the EU.



#### ECM-16N

Order No. 23.4340

**Electret neckband microphone**

A special microphone, very comfortable to wear due to its ergonomic design. The unusual combination of gooseneck and microphone ensures a secure fit and a good voice transmission. Perfectly matched to the transmitter ATS-16T.

- Can also be operated without ATS system via power supply adapter (e.g. EMA-20), available at option
- Flexible 48 cm neckband of high-quality metal gooseneck technology
- Cardioid characteristic with low acoustic feedback and a voice-optimised sound
- 1.1 m connection cable with 3.5 mm mono plug
- Supplied with foam windshield



#### ATS-12HT

Order No. 25.3310

**Hand-held microphone with integrated transmitter**

- Matching the 16-channel mono PLL audio transmission system of the ATS-10 series
- Electret microphone cartridge, cardioid characteristic
- 16 selectable channels
- Features pilot tone and is thus also suitable for the operation with ATS-16R
- Mute function
- Push-to-talk function
- Adjustable transmitting power (high:  $\leq 10$  mW/low:  $\leq 1$  mW)
- LCD for indicating channel and battery status
- Integrated charging contacts for charging directly via charging station IRS-200PS
- Power supply via 2 x 1.2 V NiMH rech. battery AA size (not supplied), operating range: approx. 50 m, dimensions:  $\varnothing 35$  mm x 200 mm, weight: 100 g

Licence-free in the EU.



Model	ECM-16N
System	electret/cardioid
Frequency range	150-16,000 Hz
Impedance	680 $\Omega$
Sensitivity	3.16 mV/Pa/1 kHz
Max. SPL	110 dB
Power supply	1.5 V via ATS-16T or 1.5-9 V via optional power supply adapter
Admiss. ambient temp.	0-40 °C
Weight	160 g
Connection	3.5 mm mono plug

#### ATS-10BAG

Order No. 23.3910

**Protective bag**, for the transmitters and receivers of the ATS-10 series. With belt clip.



## Audio Transmission Systems and Accessories

### ATS-10PS

Order No. 24.3530

**Automatic quick-charge station**, for simultaneously charging the rechargeable batteries of two units from the ATS-10 series.

- Average charging time, depending on capacity and condition of the rechargeable batteries used: approx. 3-4 hours, e.g. for 1,300 mAh rech. batteries
- Operating LEDs for "charging" and "charging completed"
- Supplied with plug-in PSU

### ATS-12C

Order No. 24.3930

**Transport case with integrated charging function**, for the transmitters and receivers of the ATS-10 series.

- For simultaneously charging the rech. batteries of up to 12 units
  - Each slot with LED for indicating battery charging status
  - Wooden case with black artificial leather cover
  - Supplied with matching PSU
  - Dimensions: 300x170x280 mm
- Supplied without units.**

### ATS-30C

Order No. 24.4320

**Transport case with integrated charging function**, for the transmitters and receivers of the ATS-10 series.

- For simultaneously charging the rech. batteries of up to 30 units
  - Each slot with LED for indicating battery charging status
  - Transport case with black artificial leather cover
  - Supplied with matching PSU
  - Dimensions: 660x170x300 mm
- Supplied without units.**



### ET-16

Order No. 22.0750

**Audio tube earphone**

- Suitable for receiver ATS-16R
- The audio signal which is created by the integrated speaker of the ATS-16R is transmitted directly to the ear via the flexible tube. An easy-to-clean silicone ear tip ensures a secure fit in the ear
- Tube length: 1 m



### ES-16

Order No. 22.0740

**Mono earphone**

- Suitable for the receivers of the ATS-16 or ATS-10 series
- Flexible rubber ear hook for a secure fit
- Dynamic 32  $\Omega$  system
- 1.2 m connection cable with gold-plated 3.5 mm stereo plug

Model	ES-16
<b>Headphones</b>	
Driver	
System	dynamic
Frequency range	20-20,000 Hz
Impedance	32 $\Omega$
Max. input power	50 mW
Sensitivity	105 dB/1 mW
Cable	1.2 m
Plug	3.5 mm stereo plug
Weight w/o cable	8 g



## Audio Transmission Systems and Accessories

### 40-channel Mono PLL Voice Transmission System, 863-865 MHz

- Suitable as a tour guide system and for any other application in which a certain voice source is to be distributed to one or more receivers
- Due to the narrow-band frequency range which has been perfectly adapted to speech applications, a parallel operation of up to 10 different channels is possible without any interference
- Licence-free in the EU

#### ATS-40R

Order No. 25.2320

##### 40-channel PLL receiver

- Including matching clip-on earphone with rubber ear hook
- Adjustable headphone output
- LCD for channel and battery status
- Power supply via 2 x 1.2 V NiMH rech. battery AA size (not supplied)
- Dimensions: 66x95x24 mm
- Weight: 115 g



#### ATS-40T

Order No. 25.2330

##### 40-channel PLL transmitter, for microphone applications.

- Integrated microphone
- Supplied with additional electret tie clip microphone
- LCD for channel and battery status
- Transmitting power:  $\leq 10$  mW (EIRP), operating range: approx. 50 m
- Power supply via 2 x 1.2 V NiMH rech. battery AA size (not supplied)
- Dimensions: 66x95x24 mm
- Weight: 120 g

Licence-free in the EU.

### 40-channel Mono PLL Voice Transmission System, 863-865 MHz

- Economy tour guide system
- Due to the narrow-band frequency range which has been perfectly adapted to voice transmissions, a parallel operation of up to 12 different channels is possible without any interference
- Licence-free in the EU

Matching chargers TXA-800PS, TXA-12C or TXA-36C are available at option.

#### ATS-42R

Order No. 25.4560

##### 40-channel PLL receiver

- Including matching clip-on earphone with rubber ear hook
- Adjustable headphone output
- Switches off automatically after not receiving an input signal for 30 minutes (power-saving function)
- LCD for channel and battery status
- Noise squelch
- Channel autolock function
- With lanyard
- Power supply via 2 x 1.2 V NiMH rech. battery AA size (not supplied)
- Dimensions: 66x102x26 mm
- Weight: 60 g



#### ATS-42T

Order No. 25.4570

##### 40-channel PLL transmitter, for microphone applications.

- Supplied with additional electret tie clip microphone
- LCD for channel and battery status
- Channel autolock function
- Lanyard
- Transmitting power:  $\leq 10$  mW (EIRP), operating range: approx. 50 m
- Power supply via 2 x 1.2 V NiMH rech. battery AA size (not supplied)
- Dimensions: 66x102x26 mm
- Weight: 60 g

Licence-free in the EU!



## Audio Transmission Systems and Accessories

### Professional 16-channel Mono PLL Audio Transmission System, 863-865 MHz, with Extensive Accessories

- Compatible with the portable amplifier systems of the TXA-800 series
- Can be combined with the TXA-800 series, but also suitable as a tour guide system and for any



other application in which a certain audio source or voice source is to be distributed to one or more receivers

- Can be combined with the transmitters and receivers of the ATS-16 series
- Simultaneous operation of up to 8 transmitters with different frequencies (dep. on distance of transmitters, stationary RF sources of interference and other local conditions)
- Licence-free in the EU

### TXA-800R

Order No. 17.2590

#### 16-channel PLL receiver

- Matching the transmitters TXA-800ST, ATS-16T and the portable amplifier system TXA-802CD with integrated wireless transmitter
- 16 selectable UHF frequencies (863.1-864.9 MHz)
- Adjustable headphone output
- Audio line mono output via 3.5 mm stereo jack
- Line output level adjustable in 3 steps
- Backlit LCD for channel/frequency and battery status
- Metal housing
- Power supply via 2 x 1.5 V battery AA size or NiMH rech. battery (not supplied)
- Supplied with earphones with rubber ear hook
- Belt clip



Matching microphone transmitter TXA-800HT is available at option.

### TXA-800ST

Order No. 17.2600

**16-channel PLL transmitter**, for microphone operation and line audio signals.

- Matching the receivers TXA-800R, ATS-16R and the portable amplifiers of the TXA-800 series
- 16 selectable UHF frequencies (863.1-864.9 MHz)
- Audio stereo line input via RCA L/R
- Balanced XLR microphone input and 6.3 mm microphone input
- Audio mono line output via RCA

- Adjustable headphone output
- Backlit LCD for channel/frequency, LEDs for carrier frequency, signal and signal peak
- Additional DC voltage output 10-15 V= for connecting an additional transmitter
- 482 mm (19") rack installation possible with supplied mounting brackets
- Power supply via supplied plug-in PSU
- Dimensions: 215x50x210 mm
- Weight: 1.25 kg

**Licence-free in the EU.**

### TXA-800PS

Order No. 25.2140

#### Intelligent PWM quick-charge station

for simultaneously charging the rech. batteries (NC, NiMH) of two receivers TXA-800R, also suitable for transmitter TXA-800HSE.

- Average charging time, depending on capacity and condition of the rechargeable batteries used: approx. 3-4 hours, e.g. for 1,300 mAh rech. batteries
- Each slot with LED for indicating a fault and battery charging status
- Mechanical reverse polarity protection
- Supplied with plug-in PSU



### TXA-12C

Order No. 25.2150

**Transport case with intelligent PWM quick-charge function**, for receiver TXA-800R and transmitter TXA-800HSE.

- For simultaneously charging the rech. batt. (NC, NiMH) of up to 12 units
- Average charging time, depending on capacity and condition of the rech. batteries used: approx. 5-6 hours, e.g. for 1,300 mAh rech. batt.
- Each slot with LED for indicating a fault and battery charging status
- Mechanical reverse polarity protection
- Wooden case with artificial leather cover
- Supplied with matching PSU
- Dimensions: 300x170x280 mm

**Supplied without units.**



### TXA-36C

Order No. 25.2160

**Transport case with intelligent PWM quick-charge function**, for the receiver TXA-800R and transmitter TXA-800HSE.

- For simultaneously charging the rech. batteries (NC, NiMH) of up to 36 units
- Average charging time, depending on capacity and condition of the rechargeable batteries

used: approx. 5-6 hours, e.g. for 1,300 mAh rech. batteries

- Each slot with LED for indicating a fault and battery charging status
- Mechanical reverse polarity protection
- Lockable plastic transport case fitted with castors
- Supplied with matching switch-mode PSU
- Dimensions: 860x230x350 mm

**Supplied without units.**



## Portable Amplifier Systems

### TXA-1000

Order No. 17.2790

### TXA-1000CD

Order No. 17.2800

### TXA-1002CD

Order No. 17.2810



Matching microphone transmitters or pocket transmitters are available at option, e.g. TXA-800HSE, TXA-800HT or ATS-12HT, ATS-162T.

**Portable high-power amplifier systems,** with integrated adjustable multifrequency receiver unit in UHF PLL technology.

- High-performance class D version 170 W<sub>MAX</sub>, with optimum efficiency
- Operation via mains connection or built-in rechargeable lead gel battery 2 x 12 V/4.5 Ah (operating time: up to 4 hours), integrated automatic battery charging, discharge protection
- For mobile applications, e.g. at sales events, lectures
- 16 selectable UHF frequencies (863.1-864.9 MHz) with diversity system
- 2-way speaker system of high power capability with a 25 cm (10") bass speaker
- 1 microphone input via comb. jack (XLR/6.3 mm), 1 microphone input (6.3 mm jack), 1 stereo line input (RCA), 1 aux input (3.5 mm jack), each input can be adjusted
- Common master control, 2-way tone control
- 1 stereo line output (RCA), 1 aux output (3.5 mm jack)
- Switchable microphone priority circuit
- Due to the extractable telescopic handle and 2 castors, the amplifier system can easily be pulled like a trolley
- Stand sleeve

**Licence-free in the EU.**

#### TXA-1000:

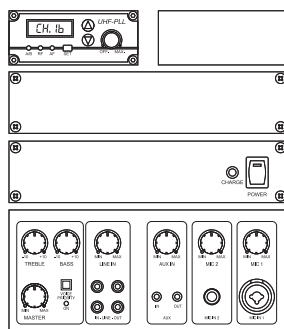
- Amplifier system with 1 wireless receiver

#### TXA-1000CD:

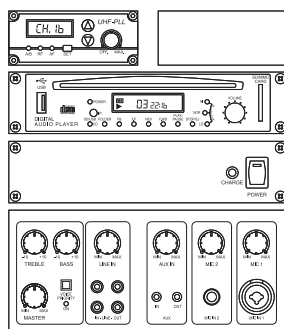
- Amplifier system with 1 wireless receiver
- CD player with anti-shock system, MP3 reproduction and slot-in mechanism
- SD card reader, USB interface
- Pitch control function
- Supplied with remote control for the CD player

#### TXA-1002CD:

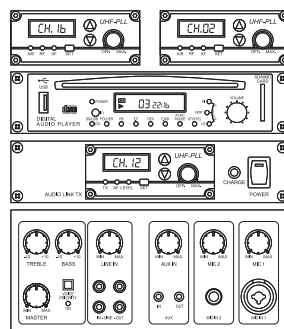
- Amplifier system with 2 wireless receivers
- CD player with anti-shock system, MP3 reproduction and slot-in mechanism
- SD card reader, USB interface
- Pitch control function
- 1 wireless transmitter for the wireless audio link operation of several TXA-1000 systems or in combination with TXA-800 systems
- Supplied with remote control for the CD player



TXA-1000



TXA-1000CD



TXA-1002CD

Model	TXA-1000	TXA-1000CD	TXA-1002CD
Output power	170 W <sub>MAX</sub> /120 W <sub>RMS</sub>	170 W <sub>MAX</sub> /120 W <sub>RMS</sub>	170 W <sub>MAX</sub> /120 W <sub>RMS</sub>
Frequency range	20-20,000 Hz	20-20,000 Hz	20-20,000 Hz
Carrier frequency	863.1-864.9 MHz	863.1-864.9 MHz	863.1-864.9 MHz
Operating range	approx. 30 m	approx. 30 m	approx. 30 m
Sensitivities			
Mic inputs	6 mV	6 mV	6 mV
Line inputs	300 mV (incl. aux)	300 mV (incl. aux)	300 mV (incl. aux)
Link	-	-	-
Equalizer, bass	±10 dB/100 Hz	±15 dB/100 Hz	±15 dB/100 Hz
Equalizer, midrange	-	-	-
Equalizer, treble	±10 dB/10 kHz	±10 dB/10 kHz	±10 dB/10 kHz
Power supply	230 V~/50 Hz/170 VA, rech. battery: 2 x 12 V/4.5 Ah	230 V~/50 Hz/170 VA, rech. battery: 2 x 12 V/4.5 Ah	230 V~/50 Hz/170 VA, rech. battery: 2 x 12 V/4.5 Ah
Admiss. ambient temp.	0-40 °C	0-40 °C	0-40 °C
Dimensions	360x580x320 mm	360x580x320 mm	360x580x320 mm
Weight	17.8 kg	18 kg	18.5 kg

**tools4music 03/2011** on the TXA-1002CD:

"It is almost impossible to provide more comprehensive features. With a power capability of 170 W, the class D power amplifier shows quite a powerful performance ... the 3-way speaker arrangement provides a very detailed sound with noticeable reserves in the bass range and high frequency range. It's the top dog for large-scale presentations or large-scale PA applications. The system also impresses by the integrated audio link."

#### Audio link operation:

The integrated wireless transmitter of the TXA-1002CD transmits audio signals to one or several TXA-1000 or TXA-800 systems. Ideally suited for larger indoor PA applications where the sound has to be radiated as evenly as possible.

## Portable Amplifier Systems

### TXA-800

Order No. 17.2220

### TXA-800CD

Order No. 17.2230

### TXA-802CD

Order No. 17.2240

### TXA-850CD

Order No. 17.3960



**Portable amplifier systems**, with integrated, adjustable multifrequency receiver unit in UHF PLL technology.

- Operation via mains connection or built-in rechargeable lead gel battery 2 x 12 V/3 Ah (operating time: up to 4 hours), integrated automatic battery charging, discharge protection
- For mobile applications, e.g. at sales events, lectures
- 16 selectable UHF frequencies (863.1-864.9 MHz) with diversity system
- 2-way speaker system of high power capability
- 1 adjustable microphone input via comb. jack (XLR/6.3 mm), 1 stereo line input (RCA), common master control and 2-way tone control
- 1 stereo line output (RCA)
- 6.3 mm RCA connection (8 Ω) for external speaker
- Stand sleeve

**Licence-free in the EU.**

#### TXA-800:

- Amplifier system with 1 wireless receiver

#### TXA-800CD:

- Amplifier system with 1 wireless receiver
- CD player with anti-shock system, MP3 reproduction and slot-in mechanism
- SD card reader, USB interface
- Pitch control function

#### TXA-802CD:

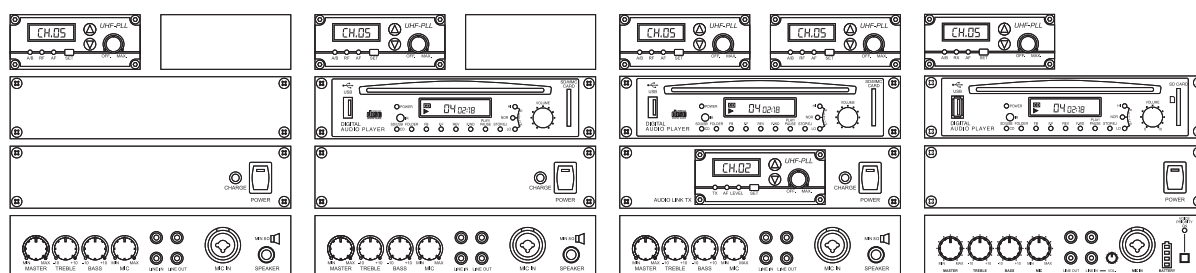
- Amplifier system with 2 wireless receivers
- CD player with anti-shock system, MP3 reproduction and slot-in mechanism
- SD card reader, USB interface
- Pitch control function
- 1 wireless transmitter for the wireless audio link operation of several TXA-800 systems

#### TXA-850CD:

- Considerable weight reduction by using a low-maintenance NiMH rechargeable battery
- Operation via mains connection or built-in NiMH rechargeable battery 2 x 12 V/4.5 Ah (operating time: up to 6 hours), integrated automatic battery charging with charging status indication
- Voice priority function
- Same features as TXA-800CD



Matching microphone transmitters or pocket transmitters are available at option, e.g. TXA-800HSE, TXA-800HT or ATS-12HT, ATS-162T.



Model	TXA-800	TXA-800CD	TXA-802CD	TXA-850CD
Output power	80 W <sub>MAX</sub> /50 W <sub>RMS</sub>	80 W <sub>MAX</sub> /50 W <sub>RMS</sub>	80 W <sub>MAX</sub> /50 W <sub>RMS</sub>	80 W <sub>MAX</sub> /50 W <sub>RMS</sub>
Frequency range	70-16,000 Hz	70-16,000 Hz	70-16,000 Hz	70-16,000 Hz
Carrier frequency	863.1-864.9 MHz	863.1-864.9 MHz	863.1-864.9 MHz	863.1-864.9 MHz
Operating range	approx. 30 m	approx. 30 m	approx. 30 m	approx. 30 m
Sensitivities				
Mic inputs	6 mV	6 mV	6 mV	6 mV
Line inputs	800 mV	800 mV	800 mV	700 mV
Link	-	-	-	-
Equalizer, bass	±15 dB/100 Hz	±15 dB/100 Hz	±15 dB/100 Hz	±15 dB/100 Hz
Equalizer, midrange	-	-	-	-
Equalizer, treble	±10 dB/10 kHz	±10 dB/10 kHz	±10 dB/10 kHz	±10 dB/10 kHz
Power supply	230 V~/50 Hz/150 VA, rech. battery: 2 x 12 V/3 Ah	230 V~/50 Hz/150 VA, rech. battery: 2 x 12 V/3 Ah	230 V~/50 Hz/150 VA, rech. battery: 2 x 12 V/3 Ah	230 V~/50 Hz/150 VA, rech. battery: 2 x 12 V/4.5 Ah
Admiss. ambient temp.	0-40 °C	0-40 °C	0-40 °C	0-40 °C
Dimensions	300x470x230 mm	300x470x230 mm	300x470x230 mm	300x470x230 mm
Weight	11.2 kg	11.9 kg	12.3 kg	9.8 kg



## Accessories for Mobile Systems



### TXA-800HT

Order No. 17.2260

**Hand-held microphone with integrated multifrequency transmitter**, with UHF PLL technology. Matching the portable amplifier systems of the TXA-1000 and TXA-800 series.

- Dynamic microphone cartridge, cardioid characteristic
- 16 selectable UHF frequencies (863.1-864.9 MHz)
- Sensitivity to be adjusted in 2 steps
- Mute function
- Backlit LCD for channel/frequency and battery status
- Transmitting power: 10 mW (EIRP)
- Power supply via 2 x 1.5 V battery AA size (not supplied)
- Supplied with 4 coloured caps to be pushed on

**Licence-free in the EU.**



### TXA-800HSE

Order No. 17.2250

**Multifrequency pocket transmitter**, with UHF PLL technology. Matching the portable amplifier systems of the TXA-1000 and TXA-800 series.

- 1 headband microphone (omnidir. char.), 1 tie clip microphone (cardioid char.)
- 16 selectable UHF frequencies (863.1-864.9 MHz)
- Metal housing
- Microphone connection via 3-pole mini XLR jack
- Audio line input via 3.5 mm stereo jack
- Sensitivity to be adjusted in 3 steps
- Mute function
- Backlit LCD for channel/frequency and battery status
- Transmitting power: 10 mW (EIRP)
- Power supply via 2 x 1.5 V battery AA size (not supplied)
- Belt clip

**Licence-free in the EU.**



### TXA-1015ACCU

Order No. 17.3210

**Rechargeable lead battery, 12 V**, universal rech. battery, also suitable as a replacement for the TXA-1000 series.

- Capacity: 12 V/4.5 Ah
- Maintenance-free, hermetically sealed
- Dimensions: 90x110x70 mm
- Weight: 1.8 kg

### TXA-815ACCU

Order No. 17.2930

**Rechargeable lead battery, 12 V**, universal rech. battery, also suitable as a replacement for TXA-110 and the TXA-800 series.

- Capacity: 12 V/2.9 Ah
- Maintenance-free, hermetically sealed
- Dimensions: 79x107x56 mm
- Weight: 1.2 kg

Model	TXA-800HT	TXA-800HSE
Carrier frequency	863.1-864.9 MHz	863.1-864.9 MHz
Audio frequency range	70-16,000 Hz	70-16,000 Hz
Frequency stability	±0.005 %	±0.005 %
Dimensions	ø 46 mm x 265 mm	65x95x30 mm
Weight	250 g	110 g



### TXA-1000WPB

Order No. 17.3630

**Protective bag, splashproof version**, suitable for portable amplifier systems TXA-1000, TXA-1000CD and TXA-1002CD.

- Robust synthetic fibre material, black
- Sound-transparent front of meshed fabric and with additional water protection cover
- The bag can stay on during operation!
- Opening for transport handle and trolley handle
- 2 lateral pockets, each with hook and loop fastener

**Supplied without unit.**

### TXA-1000BAG

Order No. 17.2820

**Protective bag**, suitable for portable amplifier systems TXA-1000, TXA-1000CD and TXA-1002CD.

- Robust synthetic fibre material, black
- Sound-transparent front of meshed fabric
- The bag can stay on during operation!
- Opening for transport handle and trolley handle
- 2 lateral pockets, each with hook and loop fastener

**Supplied without unit.**



### TXA-800WPB

Order No. 17.3620

**Protective bag, splashproof version**, suitable for portable amplifier systems TXA-800, TXA-800CD and TXA-802CD.

- Robust synthetic fibre material, black
- Sound-transparent front of meshed fabric and with additional water protection cover
- The bag can stay on during operation!
- Opening for transport handle
- 2 lateral pockets, each with hook and loop fastener

**Supplied without unit.**

### TXA-800BAG

Order No. 17.2340

**Protective bag**, suitable for portable amplifier systems TXA-800, TXA-800CD and TXA-802CD.

- Robust synthetic fibre material, black
- Sound-transparent front of meshed fabric
- The bag can stay on during operation!
- Opening for transport handle
- 2 lateral pockets, each with hook and loop fastener

**Supplied without unit.**



## Portable Amplifier Systems



### TXA-802MBT **new**

Order No. 17.4400

**Bluetooth receiver module**, for retrofitting the portable amplifier series TXA-800, TXA-850 and TXA-1000.

- Allows for a wireless reception of audio signals via Bluetooth-enabled devices, e.g. laptops, smartphones or tablet PCs
- Volume control with integrated on/off switch
- LEDs for operating status and connection status
- Power supply: 12 V= / 30 mA



### TXA-802MR

Order No. 17.2500

**Multifrequency receiver module**, with UHF PLL technology.

As a replacement for the amplifier systems of the TXA-1000 and TXA-800 series or for setting up wireless audio transmission paths.

- 16 selectable UHF frequencies (863.1-864.9 MHz) with diversity system
- Volume control
- LCD for selected channel/frequency
- LEDs for carrier and audio signals
- Power supply: 12 V= / 185 mA



### TXA-802MT

Order No. 17.2510

**Multifrequency transmitter module**, with UHF PLL technology.

As a replacement for the amplifier systems of the TXA-800 series or for setting up wireless audio transmission paths.

- 16 selectable UHF frequencies (863.1-864.9 MHz)
  - Volume control
  - LCD for selected channel/frequency
  - LEDs for carrier and audio signals
  - Power supply: 12 V= / 120 mA
- Licence-free in the EU.**

The TXA-900CD is the perfect solution of the TXA series from MONACOR whenever a powerful voice amplification with a perfect sound is required. This rechargeable amplifier system impresses by a distortion-free reproduction at a particularly high volume level.

### TXA-900CD

Order No. 17.2860



**Portable high-power amplifier system**, with integrated wireless receiver and CD player with anti-shock system.

- Operation via mains connection or built-in rechargeable lead gel battery 12 V/7 Ah (operating time: up to 8 hours), integrated automatic battery charging
- For mobile applications, e.g. at speeches, lectures, sales events
- High-quality CD player with slot-in mechanism, USB port for external storage media, reproduction of audio CDs, CD-Rs, MP3 CDs, high-speed access
- 2-way speaker system with professional PA speakers
- Very high efficiency
- 2 inputs (channels 1+2) via comb. jacks mic (XLR)/line (6.3 mm), gain controls, 3-way equalizer, bass boost function

- Link connections (2 x 6.3 mm jack) for the combination of several amplifier systems TXA-900CD
  - Due to the built-in extractable telescopic handle and 2 castors, the amplifier system can easily be pulled like a trolley
  - Wooden cabinet of perfect workmanship with PU coating (polyurethane)
  - Lateral recessed carrying handles
  - Stand sleeve
  - Supplied with practical protective bag
- Licence-free in the EU.**

Model	TXA-900CD
Output power	75 W <sub>MAX</sub> /50 W <sub>RMS</sub>
Frequency range	60-19,000 Hz
Carrier frequency	863.05 MHz
Operating range	approx. 30 m
Sensitivities	
Mic inputs	2.5 mV
Line inputs	130 mV
Link	740 mV
Equalizer, bass	±12 dB/40 Hz
Equalizer, midrange	±6 dB/1 kHz
Equalizer, treble	±12 dB/12 kHz
Power supply	230 V~ / 50 Hz/40 VA, rech. battery: 12 V/7 Ah
Admiss. ambient temp.	0-40 °C
Dimensions	310x560x285 mm
Weight	13.9 kg



tools4music 03/2011

"Clearly more features. Particularly impresses by a clear voice reproduction of high volumes."

## Portable Amplifier Systems

### TXA-450USB

Order No. 17.3950

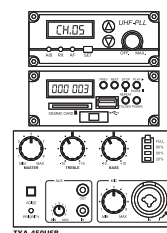


**Portable amplifier system**, with rechargeable lithium-ion battery, charging status indication and voice priority circuit.

- Considerable weight reduction by using a low-maintenance rechargeable lithium-ion battery and neodymium speaker
- Operation via built-in rechargeable lithium-ion battery 14.8 V/4.4 Ah (operating time: up to 6 hours) or supplied switch-mode PSU
- Integrated automatic battery charging with charging status indication
- Adjustable multifrequency receiver unit in UHF PLL technology and integrated USB/SD card player
- For mobile applications, e.g. at sales events, lectures
- Adjustable USB/SD card player with illuminated display, adjustable via supplied infrared remote control
- 1 wireless microphone channel with 16 selectable UHF frequencies (863.1-864.9 MHz) and volume control, diversity system

- 1 adjustable microphone input via comb. jack (XLR/6.3 mm) with switchable priority function
  - 1 adjustable line input via 3.5 mm jack
  - Volume control and 2-way tone control
  - 1 line output via 3.5 mm jack
  - 2-way neodymium speaker
  - Stand thread: 16 mm (5/8")
- Licence-free in the EU.**

Matching microphone transmitters or pocket transmitters TXA-800HT, TXA-800HSE or ATS-12HT, ATS-162T are available at option.



Model	TXA-450USB
Output power	50 W <sub>MAX</sub> /35 W <sub>RMS</sub>
Frequency range	150-16,000 Hz
Carrier frequency	863.1-864.9 MHz
Operating range	approx. 30 m
Sensitivities	
Mic inputs	5 mV
Line inputs	700 mV
Mix output	1 V
Equalizer	±15 dB/100 Hz (bass) ±10 dB/10 kHz (treble)
Power supply	rech. batt. 14.8 V/4.4 Ah, via suppl. PSU
Admiss. ambient temp.	0-40 °C
Dimensions	170x345x195 mm
Weight	3.5 kg

### TXA-15USB

Order No. 17.3150



**Portable amplifier system**, with integrated Bluetooth receiver and USB/SD card player.

- Operation via mains connection or built-in lead gel battery 12 V/7.2 Ah (operating time: up to 6 hours), with integrated automatic battery charging
- For mobile applications, e.g. at sales events, lectures
- Bluetooth receiver for the wireless connection of portable audio players
- Adjustable USB/SD card player with connection for external storage media
- 2-way speaker system
- 1 adjustable balanced microphone input via XLR, 1 adjustable microphone input via 6.3 mm mono jack, 1 adjustable CD/Tape input via RCA
- Adjustable master output with 3-way equalizer
- Link connection (6.3 mm jack) for combining several TXA-15USB systems

- Cabinet in flight case design, with folding handles
- Due to the integrated extractable telescopic handle and 2 castors, the amplifier system can easily be pulled like a trolley
- Stand sleeve

Model	TXA-15USB
Output power	20 W <sub>MAX</sub> /15 W <sub>RMS</sub>
Frequency range	70-20,000 Hz
Sensitivities	
Mic inputs	6 mV
Line inputs	600 mV
Link	380 mV
Equalizer, bass	±15 dB/100 Hz
Equalizer, midrange	±15 dB/2.5 kHz
Equalizer, treble	±15 dB/10 kHz
Power supply	230 V~/50 Hz/60 VA, rech. battery: 12 V/7.2 Ah
Admiss. ambient temp.	0-40 °C
Dimensions	410x470x310 mm
Weight	17.2 kg



## Portable Amplifier Systems

### TXA-620CD

Order No. 17.1290



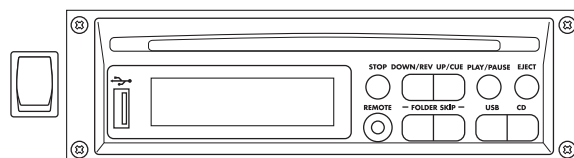
**Portable amplifier system**, with integrated wireless receiver and CD player with anti-shock system.

- Operation via mains connection or built-in rechargeable lead gel battery 12 V/7 Ah (operating time: up to 8 hours), integrated automatic battery charging
- For mobile applications, e.g. at sales events, lectures
- High-quality CD player with slot-in mechanism, USB port for external storage media, reproduction of audio CDs, CD-Rs, MP3 CDs
- 2-way speaker system
- 2 inputs (channels 1+2) via comb. jacks mic (XLR)/line (6.3 mm), gain controls, 2-way tone control
- 2 stereo line inputs (channels 3+4) via RCA jacks, gain controls, common 2-way tone control
- Adjustable talkover
- Link connections (2 x 6.3 mm jack) for the combination of several amplifier systems TXA-610CD, TXA-620CD or TXA-600
- 6.3 mm jack connection (4 Ω) for external speaker TXB-600
- Stand sleeve
- Supplied with remote control
- Supplied with practical protective shoulder bag which can stay on during operation

**Licence-free in the EU.**

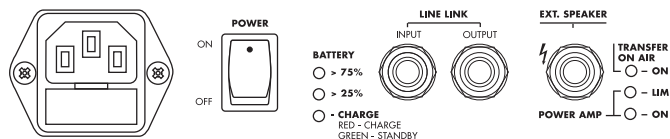


Matching microphone transmitters or pocket transmitters are available at option, e.g. TXS-821HT, TXS-820HSE, TXS-820LT or TXS-820SX.



#### tools4music 03/2011

"The volume level provided by the 50 W is simply amazing ... a pleasant reproduction of vocals ... even more awesome with the additional system TXB-600 which is available at option. Great stuff!"



Model	TXA-620CD
Output power	50 W <sub>MAX</sub> /36 W <sub>RMS</sub>
Frequency range	60-18,500 Hz
Carrier frequency	863.05 MHz
Operating range	approx. 30 m
Sensitivities	
Mic inputs	1.5 mV
Line inputs	150 mV
Link	650 mV
Equalizer, bass	±12 dB/40 Hz
Equalizer, midrange	-
Equalizer, treble	±12 dB/12 kHz
Power supply	230 V~/50 Hz/45 VA, rech. battery: 12 V/7 Ah
Admiss. ambient temp.	0-40 °C
Dimensions	235x450x280 mm
Weight	9.7 kg



## Portable Amplifier System

### TXA-600

Order No. 17.1200

863.05  
MHz

**Portable amplifier system**, with integrated wireless receiver.

- For mobile applications, e.g. at sales events, lectures
- 2-way speaker system
- 2 inputs (channels 1+2) via comb. jacks mic (XLR)/line (6.3 mm), gain controls, 2-way tone control
- 2 stereo line inputs (channels 3+4) via RCA jacks, gain controls, common 2-way tone control
- Adjustable talkover
- Link connections (2 x 6.3 mm jack) for the combination of several amplifier systems TXA-600
- 6.3mm connection (4  $\Omega$ ) for external speaker TXB-600
- Operation via mains connection or built-in rechargeable lead gel battery 12 V/7 Ah (operating time: up to 8 hours), integrated automatic battery charging
- Stand sleeve
- Supplied with practical protective shoulder bag which can stay on during operation

**Licence-free in the EU.**



Model	TXA-600
Output power	50 W <sub>MAX</sub> /36 W <sub>RMS</sub>
Frequency range	60-18,500 Hz
Carrier frequency	863.05 MHz
Operating range	approx. 30 m
Sensitivities	
Mic inputs	1.5 mV
Line inputs	150 mV
Link	650 mV
Equalizer, bass	±12 dB/40 Hz
Equalizer, midrange	-
Equalizer, treble	±12 dB/12 kHz
Power supply	230 V~/50 Hz/45 VA, rech. battery: 12 V/7 Ah
Admiss. ambient temp.	0-40 °C
Dimensions	235x450x280 mm
Weight	9.7 kg

Matching microphone transmitters or pocket transmitters are available at option, e.g. TXS-821HT, TXS-820HSE, TXS-820LT or TXS-820SX.





## Portable Amplifier System, Additional Speaker System

### TXB-600

Order No. 13.1460

**Speaker system, 50 W<sub>MAX</sub>, 36 W<sub>RMS</sub>, 4 Ω**, suitable for the portable amplifier system TXA-600.

- 2-way system
- Frequency range: 60-18,500 Hz
- Stand sleeve
- 6.3 mm jack connection
- Supplied with practical protective shoulder bag which can stay on during operation
- Dimensions: 235x450x280 mm
- Weight: 3.5 kg

Matching speaker cables of the MSC series are available in lengths of 1.5, 3, 6, 10 and 15 m.



MOBILE SYSTEMS  
SPEAKERS

### TXA-380USB

Order No. 17.3740



**Portable amplifier system** with integrated, adjustable UHF PLL multifrequency receiver unit and integrated USB/SD card player.

- For mobile applications, e.g. at sales events, lectures
- Supplied with matching hand-held microphone with UHF PLL multifrequency transmitter
- Operation via built-in rechargeable lead gel battery 12 V/3.5 Ah (operating time: up to 3 hours), 12 V car battery or mains operation
- Integrated battery charging (1 x 9 V battery, 2 x 1.5 V battery AA size)
- Adjustable USB/SD card player with connection for external storage media, recording function, illuminated display
- 1 wireless microphone channel with 16 selectable UHF frequencies (863.050-864.925 MHz) and volume control
- 2 microphone inputs, 1 aux input, adjustable
- 2-way tone control for the input channels
- 1 record output
- M8 threaded bushing for mounting onto a stand

**Licence-free in the EU.**



Model	TXA-380USB
Output power	20 W <sub>MAX</sub> /15 W <sub>RMS</sub>
Carrier frequency	863.050-864.925 MHz
Operating range	approx. 25 m
Mic input	3.2 mV
Aux input	100 mV
Record output	850 mV
Equalizer	
Bass	±6 dB/80 Hz
Treble	±6 dB/8 kHz
Power supply	
Amplifier	230 V~/50 Hz/45 VA, 12-15 V~/3.5 A
Microphone	2 x 1.5 batt. AA size
Admiss. ambient temp.	0-40 °C
Dimensions	210x285x150 mm
Weight	4.5 kg
<b>Inputs</b>	
Mic	2 x 6.3 mm jack
Aux	1 x 6.3 mm jack
<b>Outputs</b>	
Record	1 x 6.3 mm jack



## Portable Amplifier Systems

### TXA-140USB

Order No. 17.3570



**Portable high-power amplifier system**, with integrated adjustable multifrequency receiver unit in UHF PLL technology and integrated USB/SD card player.

- For mobile applications, e.g. at sales events, lectures
- Robust plastic housing of compact size with carrying handle and carrying strap
- Operation via built-in rechargeable lead gel battery 12 V/2.7 Ah (operating time: up to 3 hours) or supplied switch-mode PSU
- Integrated automatic battery charging with charging status indication
- High-power 50 W digital amplifier
- Adjustable USB/SD card player with illuminated alphanumerical display, controllable via supplied infrared remote control
- 1 wireless microphone channel with 16 selectable UHF frequencies

(863.050-864.925 MHz) and volume control

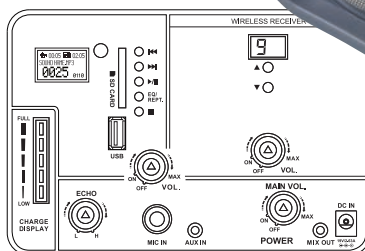
- 1 microphone input via 6.3 mm jack, 1 line input via 3.5 mm jack, common volume control and adjustable echo effect
- 1 mix output via 3.5 mm jack
- 2-way speaker system
- 9 mm (3/8") stand thread, can be mounted onto a speaker stand with standard diameter with stand adapter EBH-48 (available at option)
- Supplied with practical protective shoulder bag which can stay on during operation

**Licence-free in the EU.**

Matching microphone transmitter TXA-140HT is available at option.



Model	TXA-140USB
Output power	75 W <sub>MAX</sub> /50 W <sub>RMS</sub>
Frequency range	60-22,000 Hz
Carrier frequency	863.050-864.925 MHz
Operating range	approx. 30 m
Sensitivities	
Mic inputs	10 mV
Line inputs	150 mV
Mix output	1 V
Equalizer	-
Power supply	rech. batt. 12 V/2.7 Ah, via suppl. PSU
Admiss. ambient temp.	0-40 °C
Dimensions	190x235x330 mm
Weight	3.5 kg



### TXA-140HT

Order No. 17.3580

**Hand-held microphone with integrated multifrequency transmitter**, with UHF PLL technology. Matching the portable amplifier system TXA-140USB.

- Dynamic microphone cartridge, cardioid characteristic
- 16 selectable UHF frequencies (863.050-864.925 MHz)
- Additional audio input via 3.5 mm jack
- Backlit LCD for indicating channel and battery status
- Transmitting power: < 10 mW (EIRP)
- Power supply via 2 x 1.5 V battery AA size (not supplied)

**Licence-free in the EU.**



Model	TXA-140HT
Carrier frequency	863.050-864.925 MHz
Audio frequency range	50-15,000 Hz
Frequency stability	±0.005 %
Dimensions	39x193x28 mm
Weight	260 g

## Portable Amplifier Systems

### TXA-110USB

Order No. 17.3560

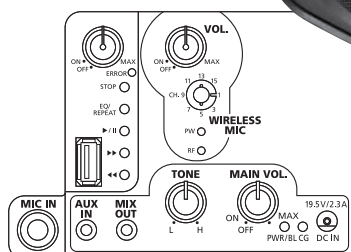


**Portable amplifier system**, with integrated adjustable multifrequency receiver unit in UHF PLL technology and integrated USB MP3 player.

- For mobile applications, e.g. at sales events, lectures
- Robust plastic housing of compact size with carrying handle and carrying strap
- Operation via built-in rechargeable lead gel battery 12 V/2.7 Ah (operating time: up to 3 hours) or supplied switch-mode PSU
- Integrated automatic battery charging
- MP3 player with USB interface and volume control, USB storage media can be connected directly (e.g. USB flash drive)
- 1 wireless microphone channel with 16 selectable UHF frequencies (863.050-864.925 MHz) and volume control
- 1 microphone input via 6.3 mm jack, 1 line input via 3.5 mm jack, common volume control and tone control
- 1 mix output via 3.5 mm jack

- 9 mm ( $\frac{3}{8}$ ") stand thread; with stand adapter EBH-48 (available at option), can be mounted onto a speaker stand with standard diameter
- Supplied with practical protective shoulder bag which can stay on during operation

**Licence-free in the EU.**



Matching microphone transmitters or pocket transmitters TXA-100HT or TXA-100HSE are available at option.

### TXA-110

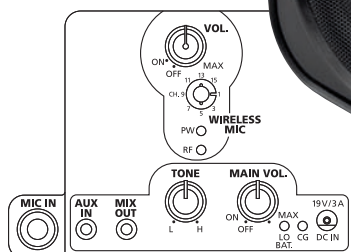
Order No. 17.2420

**Portable amplifier system**, with integrated adjustable multifrequency receiver unit with UHF PLL technology.

- For mobile applications, e.g. at sales events, lectures
- Robust plastic housing of compact size with carrying handle and carrying strap
- Operation via built-in rechargeable lead gel battery 12 V/2.7 Ah (operating time: up to 3 hours) or supplied switch-mode PSU
- Integrated automatic battery charging
- 1 wireless microphone channel with 16 selectable UHF frequencies (863.050-864.925 MHz) and volume control
- 1 microphone input via 6.3 mm jack, 1-line input via 3.5 mm jack, common volume control and tone control
- 1 mix output via 3.5 mm jack
- 9mm ( $\frac{3}{8}$ ") stand thread; with stand adapter EBH-48 (available at option), can

- be mounted onto a speaker stand with standard diameter
- Supplied with practical protective shoulder bag which can stay on during operation

**Licence-free in the EU.**



Model	TXA-110USB	TXA-110
Output power	50 W <sub>MAX</sub> /36 W <sub>RMS</sub>	50 W <sub>MAX</sub> /36 W <sub>RMS</sub>
Frequency range	60-15,000 Hz	60-15,000 Hz
Carrier frequency	863.050-864.925 MHz	863.050-864.925 MHz
Operating range	approx. 30 m	approx. 30 m
Sensitivities		
Mic inputs	10 mV	10 mV
Line inputs	100 mV	100 mV
Mix output	560 mV	560 mV
Equalizer	±8 dB/10 kHz	±8 dB/10 kHz
Power supply	rech. batt. 12 V/2.7 Ah, via suppl. PSU	rech. batt. 12 V/2.7 Ah, via suppl. PSU
Admiss. ambient temp.	0-40 °C	0-40 °C
Dimensions	160x210x290 mm	160x210x290 mm
Weight	3.2 kg	4.2 kg

## Accessories for Mobile Systems

### TXA-100HT

Order No. 17.2450

**Hand-held microphone with integrated multifrequency transmitter**, with UHF PLL technology. Matching the portable amplifier systems TXA-110 and TXA-120.

- Dynamic microphone cartridge, cardioid characteristic
- 16 selectable UHF frequencies (863.05-864.925 MHz)
- Battery status indication
- Transmitting power: < 10 mW (EIRP)
- Power supply via 2 x 1.5 V battery AA size (not supplied)

**Licence-free in the EU.**

### TXA-100HSE

Order No. 17.2440

**Multifrequency pocket transmitter**, with UHF PLL technology. Matching the portable amplifier systems TXA-110 and TXA-120.

- 1 headband microphone (omnidirectional characteristic), 1 tie clip microphone (cardioid characteristic)
- 16 selectable UHF frequencies (863.050-864.925 MHz)
- Battery status indication
- Transmitting power: < 10 mW (EIRP)
- Power supply via 2 x 1.5 V battery AA size (not supplied)
- Belt clip

**Licence-free in the EU.**

Model	TXA-100HT	TXA-100HSE
Carrier frequency	863.05-864.925 MHz	863.050-864.925 MHz
Audio frequency range	50-18,000 Hz	50-18,000 Hz
Frequency stability	±0.005 %	±0.005 %
Dimensions	ø 50 mm x 255 mm	65x100x35 mm
Weight	290 g	320 g

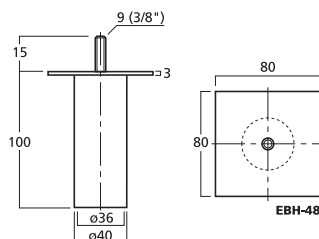


### EBH-48

Order No. 11.1130

#### Stand adapter

- For mounting the portable amplifier systems TXA-100SET, TXA-110, TXA-120 and other units with 9 mm (3/8") inside thread onto a stand
- Black lacquered steel version
- 9 mm thread (3/8") x 1.5 mm threaded bolt
- Load capacity: 7.5 kg max.



## Portable Amplifier System

### PAS-250

Order No. 17.2730

863.05  
MHz

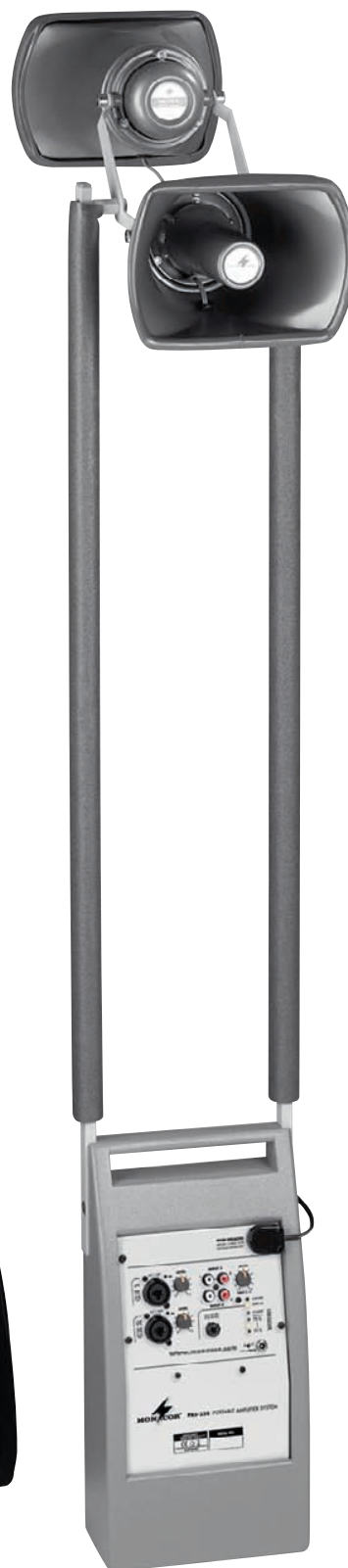
**Portable amplifier system**, suitable for processions and other mobile applications.

- Very comfortable to wear and great mobility due to rucksack method
- 2 horn speakers for a powerful reproduction
- Integrated wireless receiver
- Built-in rechargeable lead gel battery 12 V/7.2 Ah (operating time: up to 8 hours)
- Integrated automatic battery charging
- Charging socket for supplied 12 V PSU
- 2 inputs (channels 1+2) via comb. jacks mic (XLR)/line (6.3 mm), gain controls
- 2 stereo line inputs (channels 3+4) via RCA jacks, gain control
- Limiter function
- 6.3 mm connection for external speaker
- Nylon rucksack with storage pockets

**Licence-free in the EU.**

Matching microphone transmitters or pocket transmitters are available at option, e.g. TXS-821HT, TXS-820HSE, TXS-820LT or TXS-820SX.

Model	PAS-250
Output power	50 W <sub>MAX</sub> /35 W <sub>RMS</sub>
Frequency range	350-12,000 Hz
Carrier frequency	863.05 MHz
Operating range	approx. 30 m
Sensitivities	
Mic inputs	1 mV
Line inputs	150 mV
Mix output	-
Equalizer	-
Power supply	rech. batt. 12 V/7.2 Ah
Admiss. ambient temp.	0-40 °C
Dimensions	total length: 130 cm
Weight	7.7 kg



MOBILE SYSTEMS

## Active Lectern

The SPEECH-500 is equipped with innovative technology and thus the professional solution for voice and music transmissions of high requirements. The lectern features a variable electric height adjustment. A laptop can space-savingly be inserted underneath the transparent glass plate on the top part of the lectern in a 2-step illuminated compartment which has especially been designed for this purpose. The built-in audio system as well as the UHF PLL wireless technology with transmitter module and receiver module perfectly meet every requirement. In audio link operation, this allows for a wireless control of further active speaker systems which are equipped with respective wireless receivers, e.g. TXA-800 and TXA-1000 series.

### SPEECH-500

Order No. 17.3400

**Professional lectern with electric height adjustment and integrated wireless amplifier system**

- Built-in 4-channel mixing amplifier with limiter, 100 W<sub>MAX</sub>, 50 W<sub>RMS</sub>
- Variable electric height adjustment of the lectern, 85-125 cm
- Top part of the lectern with a transparent safety glass plate and illuminated compartment for a laptop
- Built-in UHF PLL receiver (TXA-802MR) with 16 selectable frequencies (863.1-864.9 MHz) with diversity system, matching transmitters are available at option, e.g. TXA-800HSE or TXA-800HT
- Built-in UHF PLL transmitter (TXA-802MT) with 16 selectable frequencies (863.1-864.9 MHz) for setting up audio link transmission
- 3 inputs via comb. jack mic (XLR)/line (6.3 mm jack), stereo line input (RCA), gain controls, 3-way equalizer for the comb. inputs
- 2 shock-absorbing XLR jacks on the top part of the lectern for 2 optional gooseneck microphones (each one uses a microphone input), matching microphone EMG-650P is available at option
- Additional XLR jack for LED gooseneck light (e.g. GNL-304, available at option)
- 12 V phantom power for mic input 1 and 2
- 1 stereo line output via RCA jacks
- 30 cm (12") full range speaker of high power capability providing a powerful sound
- High-quality wooden cabinet in a wood and lacquer combination
- Standard wood decor: Red Oak
- Holder for name of speaker to be mounted with terminal screw
- 3 additional storage compartments for documents and other utensils
- 2 swivel castors with brakes, 2 fixed castors

**Licence-free in the EU.**

**Supplied without laptop.**



**In addition to the standard wood decor Red Oak, you can choose your individual colour or desired wood decor from 18 other design options:**

Maple, Dark Apple, Beech, Dark Beech, Italian Oak, Red Oak (standard), Rustic Oak, Alder, Cherry, Dark Cherry, Light Cherry, Tobacco Acacia, Dark Walnut, Light Walnut, Wenge, Plum, Apricot, Pigeon Blue, Vanilla.

**Delivery times and extra charges on request.**



Lieferung ohne Laptop • Supplied without laptop

Model	SPEECH-500
Output power	100 W <sub>MAX</sub> /50 W <sub>RMS</sub>
Carrier frequency	863.1-864.9 MHz
Operating range	30 m max.
Frequency range	50-20,000 Hz
Sensitivities	mic1: 2 mV mic2-3: 4.5 mV line1-3: 150 mV (6.3 mm jack) line: 400 mV (RCA)
Outputs	line: 320 mV (RCA)
Equalizer	bass: ±12 dB/60 Hz mid: ±7 dB/1 kHz treble: ±12 dB/15 kHz
Power supply	230 V~/50 Hz/135 VA
Admiss. ambient temp.	0-40 °C
Dimensions	800x1,250x570 mm
Weight	45 kg



## Active Lectern

The **SPEECH-200**: Even more powerful, with more features and easier to transport due to integrated castors. Set it up, connect the power supply - ready to use!

### SPEECH-200

Order No. 17.3160

863.05  
MHz

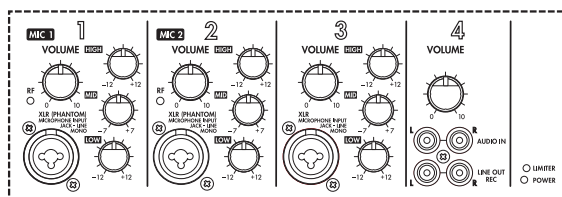
#### Professional lectern with integrated wireless amplifier system

- Built-in, powerful mixing amplifier and speaker system, 75 W<sub>RMS</sub>
- Integrated limiter
- 3 inputs via comb. jack mic (XLR)/line (6.3 mm jack), each with 3-way equalizer and gain control
- 1 stereo line input via RCA jacks with gain control
- 2 shock-absorbing XLR jacks on the top part of the lectern for 2 optional gooseneck microphones (each one uses a microphone input), with phantom power
- 1 stereo line output via RCA jacks
- 2-way speaker system
- Integrated light in the top part of the lectern
- High-quality, two-coloured wooden cabinet
- Column with 2 document compartments and 2 storage compartments
- 2 castors

Licence-free in the EU.



LECTERNS



Model	SPEECH-200
Output power	100 W <sub>MAX</sub> /75 W <sub>RMS</sub>
Carrier frequency	863.05 MHz
Operating range	25 m max.
Frequency range	60-20,000 Hz
Sensitivities	mic1: 15 mV mic2-3: 5 mV line1-3: 220 mV (6.3 mm jack) line: 250 mV (RCA)
Outputs	line: 390 mV (RCA)
Equalizer	bass: ±12 dB/60 Hz mid: ±7 dB/1 kHz treble: ±12 dB/15 kHz
Power supply	230 V~50 Hz/180 VA
Admiss. ambient temp.	0-40 °C
Dimensions	540x1,140x430 mm
Weight	33 kg

Supplied without gooseneck microphone. Matching microphone EMG-650P is available at option.

Matching microphone transmitters or pocket transmitters are available at option, e.g. TXS-821HT, TXS-820HSE, TXS-820LT or TXS-820SX.



## Active Lectern

### An innovative and high-quality solution for PA speech and music applications of high requirements:

The SPEECH-100 active lectern from MONACOR perfectly combines sound quality, volume capability and convenience. It is rechargeable battery-operated and thus perfectly mobile. The SPEECH-100 turns any area of PA application into an auditorium all by itself. It also fits perfectly into any surrounding area where a temporary or permanent talking point is required.

The integrated amplifier and the speaker technology not only allow for voice transmissions, but can also easily be used for music reproductions and e.g. dubbings of films or presentations with quite good results. Simply plug-in a gooseneck microphone and/or connect a signal source - switch on - ready to use.

#### SPEECH-100

Order No. 17.2880

863.05  
MHz

#### Professional lectern with integrated wireless amplifier system

- Built-in mixing amplifier and speaker system, 36W<sub>RMS</sub>
- Operation via built-in rechargeable lead gel batteries: 2 x 12 V/7 Ah (operating time: up to 16 hours)
- Integrated battery charging function, supplied with charger
- 2 inputs via comb. jack mic (XLR)/line (6.3 mm jack)
- 1 stereo line input via RCA jacks
- Each input with gain control
- 2 shock-absorbing XLR jacks on the top part of the lectern for 2 optional gooseneck microphones (each one uses a microphone input) or one microphone and one LED gooseneck light, available at option
- 12 V phantom power
- 1 stereo line output via RCA jacks
- 6.3 mm jack connection (8 Ω) for external speaker
- 2-way speaker system
- High-quality wooden cabinet with replaceable black or wood-coloured bottom plates
- Top part of the lectern with folding document compartment

Licence-free in the EU.

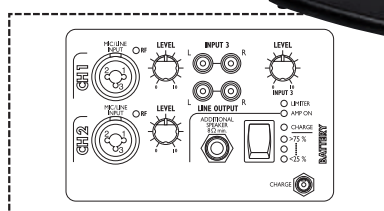


Supplied without gooseneck microphone and without gooseneck light.

Matching microphone EMG-650P and matching LED gooseneck light GNL-304 are available at option.

Matching microphone transmitters or pocket transmitters are available at option, e.g. TXS-821HT, TXS-820HSE, TXS-820LT or TXS-820SX.

Model	SPEECH-100
Output power	50 W <sub>MAX</sub> /36 W <sub>RMS</sub>
Carrier frequency	863.05 MHz
Operating range	25 m max.
Frequency range	70-20,000 Hz
Sensitivities	mic: 8 mV line: 60 mV (6.3 mm jack) line: 400 mV (RCA)
Outputs	line: 650 mV (RCA)
Equalizer	-
Power supply	rech. batt. 2 x 12 V/7 Ah, 12 V=1.5 A via suppl. charger
Admiss. ambient temp.	0-40 °C
Dimensions	525x1,120x440 mm
Weight	29 kg



#### XLR-703JSM

Order No. 34.8810

Shock-mount base with XLR socket, for the installation into lecterns, for gooseneck microphones.

- Attenuation of impact noise and structure-borne noise due to rubber-cushioned 3-pole XLR socket
- 1.2 m connection cable with 3-pole XLR plug

## Active Lectern

### ETS-840TXS

Order No. 17.2400

863.05  
MHz

#### Lectern with integrated wireless amplifier system

- Built-in mixing amplifier and speaker system, 60 W<sub>RMS</sub>
- 1 cable-connected input channel via comb. jack mic (6.3 mm)/line (XLR)
- 1 aux input channel via RCA jack L/R, switchable aux/tape/tuner/CD
- Controls for input level, tone and output level
- Record output via 6.3 mm jack
- Output for external speaker via spring-loaded terminal
- Supplied with hand-held transmitter, gooseneck microphone and gooseneck light

Licence-free in the EU.



Matching pocket transmitters  
TXS-820HSE, TXS-820LT or TXS-820SX  
are available at option.

Model	ETS-840TXS
Output power	90 W <sub>MAX</sub> /60 W <sub>RMS</sub>
Carrier frequency	863.05 MHz
Operating range	25 m max.
Frequency range	60-17,000 Hz
Sensitivities	mic1: 2 mV mic2: 1 mV line: 120 mV aux1: 100 mV aux2: 200 mV aux3: 300 mV aux4: 800 mV
Outputs	1.2 V (record out) 760 mV (line out)
Equalizer	bass: ±10 dB/100 Hz treble: ±10 dB/10 kHz
Power supply	230 V~50 Hz/135 VA
Admiss. ambient temp.	0-40 °C
Dimensions	580x1,140x420 mm
Weight	17.5 kg

## Conference Systems

### Every Voice Counts!

With the CS-200 system, MONACOR offers a professional solution for conferences with up to 1,000 delegates. The system can be integrated into existing PA systems without any problems. Beside the particularly easy and convenient operation for the chairperson and delegates, the CS-200 system impresses by an exceptionally clear voice reproduction. The modern design is both unobtrusive and elegant. The system supports the use of cameras which allows to manage even larger events and ensures that they run smoothly and efficiently. The individual microphone stations are assigned to camera positions, thus the delegates are able to see the speaker at all times. The voting function is a further feature of the CS-200 conference system which completes this impressive solution for conferences.



### CS-200MU

Order No. 17.4060

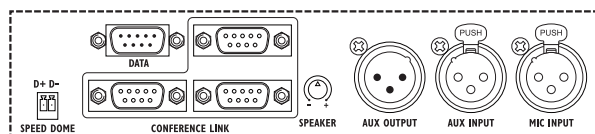


#### Main control unit for conference system CS-200

The CS-200MU allows to set up a system with up to 1,000 microphone stations, a voting function and with the facility to integrate a camera.

- For up to 1,000 microphone stations and 10 hosts
- Voting function with 5 selection buttons
- Video interface for transmitting the name of the speaker, the voting results and a camera image
- Adjustable discussion modes, e.g. number of simultaneous speakers, sole activation for the chairperson
- Large multi-purpose LCD at the unit
- Addressing of microphone stations for an easy administration
- Automatic connection detection
- Automatic deactivation of unused microphones
- Storing of the settings
- Echo suppression
- Test function for the connected microphone stations
- Activation and deactivation of voice circuits as required
- Central power supply of the microphones

- Plug-and-play solution for a quick set-up
- Extensive PC software for an easy configuration
- Connection facilities for optional units, external microphones, signal processing units, e.g. equalizer or amplifier:
  - 3 x 9-pole D-sub (connections for microphone stations)
  - 1 x 9-pole D-sub (data interface)
  - 2 x 3-pole XLR (input/output for line signals)
  - 1 x 3-pole XLR (input external microphone)
  - RS-232/485 interface (data interface for optional camera)
- Power supply: 230 V~/50 Hz
- Dimensions: 430x88x320 mm (w/o device feet, w/o mounting brackets)
- 482 mm (19", 2 RS) rack installation with supplied mounting brackets
- Matching microphone stations: CS-200CU, CS-200DU, CS-200DUB, CS-200CUF and CS-200DUF
- Matching extensions: CS-200CCDC with CS-200CCD, CS-200DUF



Further specifications on the units and matching installation accessories, e.g. connection cables and extension cables can be found at [www.monacor.com](http://www.monacor.com)



## Conference Systems



### CS-200CU

Order No. 17.4070

#### Desktop microphone station for hosts

- Priority button
- Built-in speaker
- LCD
- Voting function via 5 selection buttons
- 5 multi-purpose control buttons
- Connection facility for external recorder and for headphones with volume control, available at option
- Operating status display for microphone
- Power supply via main control unit
- Connections:
  - 1 x 3.5 mm jack (recorder)
  - 1 x 3.5 mm jack (headphones)
- Power supply via main control unit CS-200MU
- Dimensions: 170x50x135 mm
- Weight: 885 g
- Matching main control unit: CS-200MU
- Matching microphone stations: CS-200DU and CS-200DUB
- Matching microphones: CS-48EMG and CS-56EMG



### CS-200DU

Order No. 17.4080

#### Desktop microphone station for conference delegates

- Built-in speaker
- LCD
- Voting function via 5 selection buttons
- Connection facility for external recorder and for headphones with volume control, available at option
- Operating status display for microphone
- Power supply via main control unit
- Connections:
  - 1 x 3.5 mm jack (recorder)
  - 1 x 3.5 mm jack (headphones)
- Power supply via main control unit CS-200MU
- Dimensions: 170x50x135 mm
- Weight: 880 g
- Matching main control unit: CS-200MU
- Matching microphone stations: CS-200CU and CS-200DUB
- Matching microphones: CS-48EMG and CS-56EMG



### CS-200DUB

Order No. 17.4090

#### Desktop microphone station for conference delegates

- Built-in speaker
- Voting function via 5 selection buttons
- Connection facility for external recorder and for headphones with volume control, available at option
- Operating status display for microphone
- Power supply via main control unit
- Connections:
  - 1 x 3.5 mm jack (recorder)
  - 1 x 3.5 mm jack (headphones)
- Power supply via main control unit CS-200MU
- Dimensions: 170x50x135 mm
- Weight: 830 g
- Matching main control unit: CS-200MU
- Matching microphone stations: CS-200CU and CS-200DU
- Matching microphones: CS-48EMG and CS-56EMG



### CS-200CUF

Order No. 17.4100

#### Desk-mount microphone station for hosts

- Priority button
- Voting function via 5 selection buttons
- LED indicating lights
- Connection facility for external recorder and for headphones with volume control, available at option
- Operating status display for microphone
- Power supply via main control unit
- Connections:
  - 1 x 3.5 mm jack (recorder)
  - 1 x 3.5 mm jack (headphones)
- Power supply via main control unit CS-200MU
- Dimensions: 320x43x87 mm
- Required mounting cutout: 292x27 mm
- Matching main control unit: CS-200MU
- Matching microphone station: CS-200DUF
- Matching microphones: CS-48EMG and CS-56EMG



### CS-200DUF

Order No. 17.4110

#### Desk-mount microphone station for conference delegates

- Voting function via 5 selection buttons
- LED indicating lights
- Connection facility for external recorder and for headphones with volume control, available at option
- Operating status display for microphone
- Power supply via main control unit
- Connections:
  - 1 x 3.5 mm jack (recorder)
  - 1 x 3.5 mm jack (headphones)
- Power supply via main control unit CS-200MU
- Dimensions: 320x43x87 mm
- Required mounting cutout: 292x27 mm
- Matching main control unit: CS-200MU
- Matching microphone station: CS-200CUF
- Matching microphones: CS-48EMG and CS-56EMG



### CS-48EMG

Order No. 17.4040

### CS-56EMG

Order No. 17.4050

#### Gooseneck microphones

- Red lighting ring
- Cardioid characteristic
- 5-pole DIN plug
- Matching microphone stations: CS-100CU, CS-100DU, CS-200CU, CS-200DU, CS-200DUB, CS-200CUF and CS-200DUF

CS-48EMG = total length: 48 cm

CS-56EMG = total length: 56 cm

Model	CS-48EMG	CS-56EMG
System	electret, cardioid	electret, cardioid
Frequ. range	100-16,000 Hz	100-16,000 Hz
Impedance	1,000 Ω	1,000 Ω
Sensitivity	70 mV/Pa/1 kHz	70 mV/Pa/1 kHz
Max. SPL	126 dB	126 dB
Power supply	12-18 V <sub>DC</sub> , via mic. station	12-18 V <sub>DC</sub> , via mic. station
Adm. amb. temp.	0-40 °C	0-40 °C
Dimensions	ø 11/30 mm x 480 mm	ø 11/30 mm x 560 mm
Weight	105 g	145 g
Connection	5-pole DIN plug	5-pole DIN plug



## Conference Systems



### CS-200CCDC

Order No. 17.4160



#### Camera control unit for high-speed dome camera CS-200CCD

- Operation via 8 control buttons
- LCD
- 128 positions can be stored for each camera
- 4 cameras can be connected
- USB data interface
- Power supply via supplied PSU

- Connections:
  - 4 x BNC input
  - 6 x BNC output
  - 1 x RS232/RS485 (input of the main control unit)
  - 1 x RS232/RS485 (output to the camera)
- Power supply via supplied PSU
- 482 mm (19", 2 RS) rack installation with supplied mounting brackets
- Dimensions: 432x88x165 mm (without brackets and device feet)

- Weight: 3 kg
- Matching main control unit: CS-200MU
- Matching camera: CS-200CCD



### CS-200FA

Order No. 17.4130

#### Converter for desk-mount microphone stations

- 1 x 9-pole D-Sub jack
- 4 x RJ45 connection (Cat. cable is available at option)
- Power supply via main control unit
- Dimensions: 128x32x62 mm
- Matching control unit: CS-200MU
- Matching microphone stations: CS-200CUF and CS-200DUF (connected via Cat. cable)



### CS-200CCD

Order No. 17.4140



#### High-speed colour dome camera for conference system CS-200

- Zoom lens: 3.4-102 mm
- 30-fold optical zoom, 12-fold digital zoom
- Wide dynamic range (WDR)
- Automatic white balance
- Backlight compensation (BLC)
- Analogue video output
- Additional network compatibility with compression methods H.264 and MJPEG
- Multilingual on-screen menu (OSD)
- 360° pan (endless), -10° to +190° tilt
- Autopan function and cruise function
- Matching main control unit: CS-200MU
- Matching camera control unit: CS-200CCDC

### CS-200DC

Order No. 17.4390

**PSU**, for microphone stations CS-200CU or CS-200DU. This additional power supply is required for the operation of more than 45 microphone stations at one main control unit.

- Sufficient power for 2 lines with 25 additional microphone stations each
- Connected to the cables between 2 microphone stations
- Input microphone station: 1 x 9-pole D-sub jack
- Outputs to the microphone stations: 2 x 9-pole D-sub jack
- Output power: 18 V/5.6 A
- Dimensions: 171x52x153 mm
- 100-240 V~/50/60 Hz via 3-pin IEC connection
- Weight: 600 g



### CS-200CCDF

Order No. 17.4150

#### Mounting frame for the high-speed dome camera CS-200CCD



### CS-200YC

Order No. 17.4120

**Y connection cable**, for connecting a microphone station to the main control unit and a further microphone station.

- Cable length between main control unit and a further microphone station: 2.5 m
- Cable length to the microphone station: 1 m
- Connections:
  - 1 x 8-pole DIN plug
  - 1 x 8-pole DIN jack
  - 1 x 9-pole D-Sub plug
- Matching main control unit: CS-200MU
- Matching microphone stations: CS-200CU, CS-200DU, CS-200DUB and CS-200FA

Model	CS-200CCD
Image sensor	6.35 mm (1/4") CCD, SONY
Number of pixels	hor. 720 x vert. 576
Resolution	650 lines
Lens	3.4-102 mm
Min. illumination	0.1 lx (colour) 0.01 lx (B/W)
Admiss. ambient temp.	0-40 °C
Power supply	24 V~/12 V~/20 W
Dimensions	ø 131 mm x 226 mm
Weight	1.6 kg
Other features	AGC, BLC, RS-485

# Conference Systems

## Conference Management with a System

With the conference system CS-100, MONACOR provides the ideal solution for medium-sized conference rooms, because the system can be extended to up to 128 delegates. It consists of a main control unit CS-100MU, the microphone station for the chairperson CS-100CU and the microphone station for the individual conference delegates CS-100DU. The system can be integrated into an existing PA system with corresponding power amplifiers without any problems. A particularly user-friendly operation and a modern design complete the attractive and comprehensive system.



### CS-100MU

Order No. 17.3980



#### Main control unit for conference system CS-100

- For up to 128 microphone stations and 10 hosts
- Adjustable discussion modes (e.g. number of simultaneous speakers, sole activation for the chairperson)
- Automatic connection detection
- Automatic switch-off and storing of the settings
- Built-in amplifier, 2 x 40 W<sub>RMS</sub>
- Built-in preamplifier (mixer)

- Central power supply of the microphones
- Connection facility for optional components, e.g. external speakers, microphones, recorders, signal processing units (e.g. equalizers) or other audio line sources:
- 3 x 6.3 mm jack (microphone input)
- 1 x 6.3 mm jack (microphone input with volume control)
- 3 x 9-pole D-sub (connections for microphone stations)

- 2 x RCA (input/output equalizer)
- 3 x RCA (input for line signals)
- 2 x RCA (output for line signals)
- 1 x RCA (external input microphone stations)
- Power supply: 230 V~/50 Hz
- Dimensions: 430x88x260 mm (w/o device feet, w/o mounting brackets)
- 482 mm (19", 2 RS) rack installation with supplied mounting brackets
- Matching microphone stations: CS-100CU and CS-100DU



### CS-100CU

Order No. 17.3990

#### Microphone station for hosts

- Priority button
- Convenient operation
- Built-in speaker
- Connection for external recorders
- Operating status display for microphone
- Connections:
- 1 x 3.5 mm jack
- 1 x 5-pole DIN jack (mic. connection)
- 1 x 8-pole DIN jack (input connector plug main control unit)
- Frequency range: 100-16,000 Hz
- Power supply via main control unit CS-100MU
- Dimensions: 143x60x150 mm
- Weight: 820 g
- Matching microphones: CS-48EMG and CS-56EMG



### CS-100DU

Order No. 17.4000

#### Microphone station for conference delegates

- Convenient operation
- Built-in speaker
- Connection for external recorders
- Operating status display for microphone
- Connections:
- 1 x 3.5 mm jack
- 1 x 5-pole DIN jack (mic. connection)
- 1 x 8-pole DIN jack (input connector plug main control unit)
- Frequency range: 100-16,000 Hz
- Power supply via main control unit CS-100MU
- Dimensions: 143x60x150 mm
- Weight: 820 g
- Matching microphones: CS-48EMG and CS-56EMG

### CS-100YC

Order No. 17.4010

**Y connection cable**, for connecting a microphone station to the main control unit and another microphone station.

- Cable length between main control unit and microphone station: 2.5 m
- Cable length to another mic. station: 1 m
- Connections:
- 2 x 8-pole DIN plug
- 1 x 8-pole DIN jack
- Matching main control unit: CU-100MU
- Matching microphone stations: CS-100CU and CS-100DU



### CS-98EXTC

Order No. 17.4020

#### Extension cable, 20 m

- To be connected between main control unit and microphone station
- Matching microphone stations: CS-100CU, CS-100DU, CS-200CU, CS-200DU and CS-200DUB

### CS-88EXTC

Order No. 17.4030

#### Extension cable, 3.5 m

- To be connected between CS-100YC and microphone station
- 1 x 8-pole DIN jack
- 1 x 8-pole DIN plug



## Conference Systems

The control unit CS-50CU, the microphone station for the chairperson CS-50CH and the microphone station for conference delegates CS-50DU together form a conference discussion system with extensive configuration facilities for maximum flexibility.

### CS-50CU

Order No. 17.3420



#### Control unit

The control centre of the conference discussion system. The CS-50CU allows to set up a system with up to 50 microphone stations and at the same time supplies their operating voltage.

- Adjustable discussion modes (e.g. number of simultaneous speakers, speaking time limits, sole activation for the chairperson)
- Built-in speaker and connection for optional headphones
- Keypad lock
- Date and time indication via LCD
- Stopwatch

- Test function for connected microphone stations
- Connection facilities for optional units, e.g. external microphone, telephone coupler, signal processing units

(e.g. equalizer), recorders, amplifiers, audio line sources



Model	CS-50CU
Connections	2 x RCA (input/output for telephone coupler) 2 x RCA (input/output, e.g. for equalizer) 2 x RCA L/R (input/output for recorder) 2 x RCA (input/output for line signals) 1 x XLR (microphone input) 2 x 7-pole DIN jack (connection for microphone stations)
Power supply	100-240 V~/50-60 Hz/90 VA
Dimensions	360x90x150 mm
Weight	1.7 kg



### CS-50CH

Order No. 17.3410

#### Microphone station for the chairperson

- Back electret cartridge of cardioid characteristic optimised for voice transmissions
- Built-in speaker and connection for optional headphones

- Convenient operation due to large function buttons
- Status displays on the microphone and desktop station
- Priority button with chime

### CS-50DU

Order No. 17.3430

#### Microphone station for the conference delegates

- Back electret cartridge of cardioid characteristic optimised for voice transmissions
- Built-in speaker and connection for optional headphones

- Convenient operation due to large function button
- Status displays on the microphone and desktop station

Model	CS-50CH	CS-50DU
System	back electret/cardioid	back electret/cardioid
Frequency range	50-18,000 Hz	50-18,000 Hz
Connections	2 x 3.5 mm jack 1 x 2 m connection cable with 7-pole DIN plug 1 x 7-pole DIN jack	2 x 3.5 mm jack 1 x 2 m connection cable with 7-pole DIN plug 1 x 7-pole DIN jack
Power supply	via control unit CS-50CU	via control unit CS-50CU
Dimensions	115x65x170 mm (console housing)	115x65x170 mm (console housing)
Gooseneck length	400 mm	400 mm
Weight	1.1 kg	1.1 kg

# KNOW-HOW: Flush-mounted Ceiling Speakers

List of PA flush-mounted ceiling speakers, sorted by mounting dimensions

Item	Power rating	Connection	Outside Ø	Mounting Ø	Mounting depth	R	F
EDL-22	6 / 3 W	100 V	83 mm	73 mm	67 mm	K	K
EDL-33	6 / 3 / 1.5 W	100 V	105 mm	90 mm	110 mm	M	M
EDL-82/WS	6 / 3 / 1.5 W	100 V	100 mm	92 mm	96 mm	K	M
EDL-84/WS	6 / 3 W	100 V	103 mm	92 mm	80 mm	K	M
EDL-204	20 / 15 / 10 / 5 / 2.5 W	100 V	132 mm	104 mm	118 mm	K	K
EDL-35	6 / 3 / 1.5 W	100 V	135 mm	110 mm	110 mm	M	M
EDL-150/WS	10 / 5 / 2.5 / 1.25 / 0.625 W	100 V	150 mm	120 mm	70 mm	M	M
EDL-206	20 / 15 / 10 / 5 / 2.5 W	100 V	180 mm	132 mm	130 mm	K	K
EDL-165C/WS	2 x 6 / 3 / 1.5 W	100 V	167 mm	140 – 150 mm	90 mm	M	M
EDL-24	6 / 3 / 1.5 W	100 V	170 mm	142 mm	60 mm	K	M
EDL-25	6 / 3 / 1.5 W	100 V	205 mm	165 mm	60 mm	K	M
EDL-155	15 / 10 / 5 / 2.5 / 1.25 W	100 V	202 mm	165 mm	95 mm	K	K
EDL-603	3 / 1.5 / 1 / 0.75 W	100 V	200 mm	180 mm	60 mm	M	M
EDL-605	6 / 3 W	100 V	200 mm	180 mm	50 mm	M	M
EDL-606	6 / 3 / 1.5 W	100 V	200 mm	180 mm	60 mm	M	M
EDL-612	12 / 6 / 3 W	100 V	200 mm	180 mm	60 mm	M	M
EDL-620	20 / 10 / 5 W	100 V	200 mm	180 mm	65 mm	M	M
EDL-36TW	10 / 5 / 2.5 W	100 V	200 mm	190 mm	110 mm	M	M
EDL-156	15 / 10 / 5 / 2.5 / 1.25 W	100 V	226 mm	190 mm	85 mm	K	K
EDL-26	10 / 5 / 2.5 / 1.25 W	100 V	230 mm	200 mm	75 mm	K	M
EDL-68/WS	6 / 3 W	100 V	220 mm	200 mm	65 mm	M	M
EDL-36C/WS	10 / 5 / 2.5 W	100 V	230 mm	207 mm	120 mm	M	M
EDL-158	15 / 10 / 5 / 2.5 / 1.25 W	100 V	250 mm	210 mm	85 mm	K	K
EDL-8	10 / 6 / 4 / 2 W	100 V	252 mm	220 mm	80 mm	K	M
EDL-35AB/WS	2 x 6 / 3 / 1.5 W	100 V	245 mm	220 mm	120 mm	M	M
EDL-35ABC/WS	2 x 6 / 3 / 1.5 W	100 V	245 mm	220 mm	130 mm	M	M
EDL-11 (TW / SW)	10 / 6 / 4 / 2 W	100 V	269 mm	225 mm	110 mm	M	M
EDL-38TW	10 / 5 / 2.5 W	100 V	267 mm	230 mm	120 mm	M	M
EDL-250C	6 / 3 / 1.5 W	100 V	252 mm	230 mm	42 mm	M	M
EDL-10 (TW)	10 / 6 / 4 / 2 W	100 V	262 mm	235 mm	85 mm	M	M
EDL-28	10 / 5 / 2.5 / 1.25 W	100 V	275 mm	240 mm	75 mm	K	M
EDL-65TW	30 / 15 / 7.5 W	100 V	280 mm	260 mm	175 mm	K	M
ESP-15/WS	15 / 7.5 / 4 / 2 / 1 W	100 V	220 x 146 mm	190 x 115 mm	70 mm	K	M
SPE-15/WS	25 W (50 W max.)	8 ohms	220 x 146 mm	190 x 115 mm	70 mm	K	M
ESP-17/WS	15 / 7.5 / 4 / 5 / 1 W	100 V	300 x 214 mm	270 x 185 mm	90 mm	K	M
SPE-17/WS	30 W (60 W max.)	8 ohms	300 x 214 mm	270 x 185 mm	90 mm	K	M
ESP-22/WS	20 / 15 / 10 / 5 / 2.5 W	100 V	306 x 220 mm	275 x 190 mm	100 mm	K	M
SPE-22/WS	40 W (80 W max.)	8 ohms	306 x 220 mm	275 x 190 mm	100 mm	K	M
ESP-32/WS	30 / 15 / 7.5 / 4 / 2 W	100 V	358 x 256 mm	330 x 225 mm	100 mm	K	M
SPE-32/WS	50 W (100 W max.)	8 ohms	358 x 226 mm	330 x 225 mm	100 mm	K	M
SPE-70/WS	20 W (40 W max.)	8 ohms	90 mm	73 mm	37 mm	K	K
SPE-72/WS	20 W (40 W max.)	4 ohms	90 mm	73 mm	37 mm	K	K
SPE-82/...	6 W (12 W max.)	4 ohms	100 mm	92 mm	57 mm	K	M
SPE-110P/...	10 W (30 W max.)	4 ohms	132 mm	101 mm	40 mm	K	K
SPE-24	20 W (40 W max.)	4 ohms	132 mm	103 mm	60 mm	K	K
CRB-130/WS	20 W (40 W max.)	4 ohms	150 mm	110 mm	50 mm	K	K
CRB-230/WS	25 W (50 W max.)	4 ohms	150 mm	110 mm	50 mm	K	K
SPE-130/WS	20 W (40 W max.)	8 ohms	150 mm	110 mm	50 mm	K	K
SPE-140/WS	10 W (20 W max.)	4 ohms	140 mm	110 mm	30 mm	M	M
SPE-230/WS	25 W (50 W max.)	8 ohms	150 mm	110 mm	50 mm	K	K
SPE-15F/WS	15 W (30 W max.)	4 ohms	150 mm	111 mm	25 mm	K	K
SPE-25	20 W (40 W max.)	4 ohms	150 mm	113 mm	60 mm	K	K
SPE-150/WS	15 W (30 W max.)	4 ohms	153 mm	120 mm	34 mm	M	M
SPE-158/WS	15 W (30 W max.)	8 ohms	153 mm	120 mm	34 mm	M	M
CRB-265/WS	30 W (60 W max.)	4 ohms	180 mm	133 mm	60 mm	K	K
SPE-165/WS	25 W (50 W max.)	8 ohms	180 mm	133 mm	60 mm	K	K
SPE-265/WS	30 W (60 W max.)	8 ohms	180 mm	133 mm	60 mm	K	K
SPE-26	20 W (40 W max.)	4 ohms	182 mm	134 mm	65 mm	K	K
SPE-16F/WS	15 W (30 W max.)	4 ohms	181 mm	134 mm	25 mm	K	K
CRB-165/WS	25 W (50 W max.)	4 ohms	180 mm	135 mm	60 mm	K	K
SPE-254/WS	40 W (80 W max.)	4 ohms	224 mm	165 mm	68 mm	K	K
SPE-264/WS	45 W (90 W max.)	4 ohms	226 mm	190 mm	71 mm	K	K
SPE-284/WS	50 W (100 W max.)	4 ohms	250 mm	210 mm	85 mm	K	K

Legend: R = frame F = front grille K = plastic M = metal

## Important Note:

**The dimensions may deviate. Ceiling cutouts should not be made prior to receiving the speakers.**